



2021 Zimbabwe Infrastructure Investment Programme



TABLE OF CONTENTS

INTRODUCTION	9
DRIVERS OF INFRASTRUCTURE INVESTMENT	12
CLIMATE CHANGE	15
INFRASTRUCTURE DELIVERY UPDATE	17
Projects Delivery Review	19
2020 Infrastructure Investment Programme Update	21
NATIONAL DEVELOPMENT STRATEGY (NDS1) 2021-2025	33
2021 INFRASTRUCTURE INVESTMENT PROGRAMME	35
Prioritisation Framework	36
ENERGY	38
Sector Overview	39
2021 Priority Interventions for the Energy Sector	40
WATER SUPPLY AND SANITATION	42
Sector Overview	45
Dam Projects	46
Urban Water and Sanitation	48
Water Supply Schemes for Small Towns and Growth Points	49
Rural WASH	50
TRANSPORT	51
Sector Overview	52
Roads	53
Rail Transport	59
Airports	60
Border Posts	62
HOUSING DEVELOPMENT	64
Policy Interventions	65
Institutional Housing	66
Social Housing	68
Spatial Planning	69
Civil Service Housing Fund	70
DIGITAL ECONOMY	70
Sector Overview	71
2021 ICT Priority Interventions	72
AGRICULTURE	75
Irrigation Development	76
HUMAN CAPITAL DEVELOPMENT AND WELL BEING	80
Education	80
Health	82
Social Services	86
TRANSFERS TO PROVINCIAL COUNCILS & LOCAL AUTHORITIES	87
PROCUREMENT	89
MONITORING AND REPORTING ON PROGRESS	91

FOREWORD



Occurrences of epidemics, natural disasters and calamities are often unpredictable, with volatile impacts on economies and communities across the globe. The resultant after-shocks invariably undermine income and employment prospects, exacerbating inequalities, in particular for vulnerable groups within societies.

The COVID 19 pandemic, whose effects and devastation have been felt across all parts of the world, have magnified pre-existing differences in economic and social conditions of the vulnerable citizenry. It has disproportionately disrupted the livelihoods of those at the lower end of the income strata, and with limited scope for self-isolation-exacerbating employment insecurities and, hence, vulnerability to its contagion.

The robust response to the pandemic by Government, including the stimulus package of ZWL\$18 billion, equivalent to 9% of GDP, have been targeted at ameliorating some of the negative effects on the productive sectors, safeguarding livelihoods, and saving of lives.

In the process, Government consciously took the costly but necessary decision to ring fence and protect infrastructure spending on priority projects critical to facilitating provision of public utility services in areas such as electricity supply, provision of water and sanitation, transport and ICT broadband services. Sustaining public spending on construction activities has served to improve delivery of infrastructure projects, under the difficult environment posed by the Covid 19 pandemic, as Government meaningfully begins to redress and overcome some of the challenges arising from the prevailing infrastructure gap constraining rapid economic growth and development.

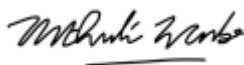
Implementation of the Transitional Stabilisation Programme (TSP) has shown that success towards stabilising the economy is much more about collective responsibility and partnerships. Collaboration between the public and private sectors, as well as our citizenry, will be deepened going forward as the New Dispensation strives towards the realisation of our Vision 2030 desired economic growth recovery that is robust and sustainable.

The new National Development Strategy (2021-2025), a successor to the TSP, will focus on consolidating the gains achieved on the monetary and fiscal front, whilst also building resilience and recovery of the economy against future external shocks.

The NDS, therefore, offers an ideal opportunity for a restart to invigorate public investment towards the revamping and development of a better infrastructure ecosystem for the country. With improved scope for provision of widespread infrastructure services, the country is better placed to exploit diverse opportunities that exist across all our Districts and Provinces in order to build a better future for all.

I have had opportunity to travel and interact with various communities across our Provinces, in the process benefiting from insights on interventions and projects that would positively impact on people's lives.

In this regard, our National Public Infrastructure Investment Programme for 2021, prioritises and embraces projects identified by communities. Government will provide the right framework for building back better, the critical public infrastructure services citizens require to enable their participation in the country's socio-economic development.



Prof. M. Ncube

MINISTER OF FINANCE AND ECONOMIC DEVELOPMENT

November 2020

PREFACE



Tackling the country's infrastructure gap remains an outstanding challenge demonstrated through inadequate provision and delivery of public services in the context of an evolving devolved landscape.

Addressing this shortfall will, given the growing demands for increased public services, need to be a sustained process, more so given the limited annual budget capacity, and absence of longer term concessional financing from the traditional multilateral development financial cooperating partners.

Crowding in private sector capital, through Public Private Partnership arrangements, that has proved successful elsewhere in the world, has been difficult in our domestic macro-economic environment, given the absence of a developed pipeline of bankable projects.

The advent of COVID 19 has brought with it complexities in execution of ongoing projects, entailing disruptions to input supply chains, as well as worldwide lockdowns that left critical labour unable to access construction sites.

Despite these challenges, Government's resolve to addressing the infrastructure challenge facing the country continues to bear fruit, with tangible progress being recorded across more infrastructure sectors.

Major trunk roads are now being upgraded, new infrastructure being constructed at our State universities, whilst additional raw water sources are being delivered to mitigate the impact of climate change.

The key to our success has mainly been prioritisation of infrastructure interventions, and in the process, requiring value for money and making sure every dollar is stretched to count. In this regard, targeted approaches have ensured application and direction of the limited fiscal resources towards those priority projects with the greatest impact.

As part of our commitment to deliver on the infrastructure demands of the economy and citizenry, Government will further strive to address the apparent

capacity gaps within implementing agencies, that have resulted in some of the public projects incurring cost and time overruns. This includes restructuring programmes of public entities involved in public services provision, such as local authorities where delivery of services deteriorated during the course of the fiscal year 2020.

Government will also ensure the right personnel and equipment is made available across the technical Ministries, to facilitate efficient and effective implementation of projects.

As Government embraces projects identified under the National Development Strategy, and embark on COVID 19 post recovery measures, strengthening of our public institutions' ability to plan and implement projects timeously and within budget will be prioritised, in line with the Public Investment Management Guidelines unveiled in November 2018.

This will include requiring that projects submitted for implementation go through rigorous technical analysis, have been properly costed, including their fit within the overall National Development Strategy.

Consistent with the NDS, the priorities for the National Public Infrastructure Investment Programme for 2021 will be towards maintaining and repairing current infrastructure, complete ongoing and stalled projects, whilst also investing in project development activities that would ensure we have a compendium of pipeline bankable projects, ready for the market.

By spending the limited fiscal resources wisely and crowding in private capital, Government should progressively recover key infrastructure that is supportive of economic recovery and people's well-being.



G. T. Guvamatanga
SECRETARY FOR FINANCE AND ECONOMIC DEVELOPMENT

November 2020



INTRODUCTION

1. We interact with infrastructure everyday, from the lights we flick on at night, water in the shower or the bridge across an otherwise impassable river that children pass on daily when going to school. During disasters, such as Cyclone Idai, infrastructure services facilitate swift response and assistance that is required to save lives.
2. Quality transport systems, require roads, rail and airports that connect people and commerce to markets, as well as reduce travel times and cost of business.
3. Social infrastructure, such as water and sanitation, education, health, as well as provision of housing, all contribute towards improvement of people's livelihoods, enhancing capacity, building a healthy productive society, and promoting income and gender equality.
4. Its availability across communities also builds resilience against climate change impacts of drought and floods, including other emerging challenges, such as the COVID 19 pandemic.
5. Reliable and affordable enablers, such as electricity supply and ICT services, raise productivity of industry, open new economic opportunities and jobs for the marginalised, whilst also ensuring the country's products are able to compete on the regional as well as global stages.

6. On their blog, *Public Investment for Recovery*, the International Monetary Fund (IMF) recommends that, in periods of uncertainty, such as under the current COVID 19 pandemic, increasing public investment by 1% of GDP boosts growth by 2.7%, private investment by 10% and employment by 1.2% after two years.
7. Furthermore, public investment generates between 2 and 8 jobs for every US\$1 million spent on traditional infrastructure and between 5 and 14 jobs for every US\$1 million spent on research and development, green electricity and efficient buildings.
8. The World Economic Forum Global Competitiveness Report (2019), an annual assessment of the drivers of productivity and long-term economic growth for any economy, places the country at 127 out of 141 countries, identifying the quality of the country's infrastructure as being 129 out of the 141 countries assessed.

9. The ranking of specific infrastructure services in the country are as shown in the table below.

Zimbabwe Selected Infrastructure Services Rankings

GLOBAL COMPETITIVENESS INDEX: ZIMBABWE RANKED 127 OUT OF 141 COUNTRIES	
SELECTED INFRASTRUCTURE SECTORS	RANKING OUT OF 141
Transport	117
<i>Road connectivity</i>	39
<i>Quality of road infrastructure</i>	122
<i>Railroad density</i>	62
<i>Efficiency of train services</i>	96
<i>Airport connectivity</i>	123
<i>Efficiency of air transport</i>	119
<i>Efficiency of seaport services</i>	112
Utility Infrastructure	130
<i>Electricity access</i>	127
<i>Electricity supply quality</i>	104
<i>Exposure to unsafe drinking water</i>	120
<i>Reliability of water supply</i>	135
ICT Adoption	112
<i>Mobile-cellular telephone subscriptions</i>	114
<i>Mobile-broadband subscriptions</i>	102
<i>Fixed-broadband internet subscriptions</i>	108
<i>Fibre internet subscriptions</i>	85
<i>Internet users</i>	115

World Economic Forum Global Competitiveness Report (2019)

10. Bearing the above in mind, Government has prioritised public infrastructure investment as a powerful tool in its stimulus packages, also meant to limit the economic fallout from the Covid 19 pandemic. By investing in the right infrastructure, the country not only saves lives and livelihoods, but will also lay a solid foundation for a more resilient economy going forward.
11. The support towards projects implementation will ensure construction activity creates and sustains the much-needed economic boost to the overall economy.

12. Navigating through the challenges of Covid19 has been difficult, requiring and entailing strategic interventions and stabilising the macro-economic environment, and helping the most affected and those in need.
13. The pandemic has also meant embracing new norms, challenging old assumptions that might not be any longer relevant, and adopting more efficient and resilient ways of delivering infrastructure services, ensuring wherever possible that we build back better.

DRIVERS OF INFRASTRUCTURE INVESTMENT

14. An enabling infrastructure environment is necessary to support higher levels and quality of investment decisions and impact on national outcomes from such investment.
15. The InfraCompass 2020, published by the World Bank, identified eight determinants of quality infrastructure provision, and proposes policy actions and reforms that deliver better infrastructure outcomes for any country.

16. The Table below provides a summary of the key drivers identified in the report.

KEY DRIVER	MAJOR ISSUE
Governance and institutional settings	Protections for creditors to recover their investment if a business or project fails
Investment policy and economic regulation	Ability of the government to formulate and implement sound regulations to promote infrastructure investment and delivery
Clarity and consistency of the permits and land acquisition process	Reliability and transparency of land administration processes and procedures
Planning and infrastructure appraisal processes	Transparent public infrastructure project pipelines to allow industry to prepare for projects and citizens to have a say
Efficiency of government contracting and procurement	Transparency of procurement processes
The extent and nature of recent infrastructure investment activity and extent of private sector involvement over the last five years, relative to the size of the economy	A strong recent track record of investment in infrastructure by governments and the private sector, relative to GDP
The capacity of governments to invest in infrastructure over time	Credit rating of the government to borrow money for infrastructure spending
The availability and cost of funding for infrastructure	Overall depth of the local financial market to sustain relatively large financial transactions

17. Furthermore, in their published paper **‘Well Spent, How Strong Infrastructure Governance Can End Waste in Public Investment’**, the IMF also identified inefficiencies within public institutions that have led to more than one-third of public resources spent on infrastructure, being lost worldwide.
18. Inefficiencies such as poor project appraisal, rampant rent seeking behavior and corruption, result in lost opportunities for full utilisation of a country’s limited resources. Even perfectly good infrastructure assets

can be lost and fail to deliver expected services due to poor maintenance and management.

19. Hence, establishing strong institutions in the public sector is critical in achieving better outcomes from infrastructure spending outlays.

20. Consistent with this objective, Government has prioritised interventions that create a supportive investment climate, improve infrastructure governance systems and reduce construction transaction costs, among others.



21. Through the Ease of Doing Business reforms, Government has sought to address the **10 World Bank Doing Business Dimensions**, resulting in the country improving by 15 positions to 140 as at September 2019.

22. In line with the Public Investment Management Guidelines, more robust and streamlined approach to project preparation and execution, together

with fair and transparent procurement processes, are being developed to ensure efficiency, affordability and sustainability of public infrastructure services.

23. Furthermore, reform of forty-one state-owned enterprises and parastatals, some of which provide critical public services, are being targeted for various interventions that include liquidation, partial privatisation, privatisation, commercialisation and departmentalization with the goal of ensuring sustainable provision of public services.
24. Already, the unbundling of the Civil Aviation Authority of Zimbabwe into a streamlined Civil Aviation Authority of Zimbabwe and a new Airports Management Company has been completed, with appointment of key personnel and transfer of assets and staff to the respective entities already underway.
25. Such reforms ultimately provide scope for private sector investment and competition that brings with it, efficiencies in the management of public infrastructure assets and services.

CLIMATE CHANGE

26. Over the recent years, the country was hit by two shocks and climate change impacts of drought and floods, all of which have put pressure on the limited national resources and capacities.

27. The increased scope, frequency and magnitude of climate change impacts on the economy and people's livelihoods continue to escalate with each passing year. Such impacts include the following:

- Increased scarcity of drinking water for settlements, as raw water sources, particularly dams and boreholes, dry up.
- Destruction of key infrastructure assets, particularly roads, buildings and water points, requiring costly restoration programmes.
- Reduced hydro-generation capacity at Kariba South Hydro-Power Station that has led to load shedding and undermined economic activity and people's well being.
- Reduced agricultural output and productivity, with implications on household food security and nutrition. The loss of arable land and pasture has decimated livestock, resulting in loss of incomes.
- Deterioration in the health status of the population and displaced vulnerable populations.



Completed restoration works on the Skyline-Chimanimani Road

28. Climate projections show that extreme weather events will become even more frequent and destructive going forward, hence the need to factor such extreme events in the way we plan, execute and manage public infrastructure assets.



Houses being constructed for families affected by Cyclone Idai at West End Farm, Nedziwa

29. Climate responsive infrastructure designs for critical sectors, such as housing, transport, communication, among others, will be prioritised in order to anticipate and factor such extreme weather occurrences as part of measures to build resilience of communities.
30. When such events occur, the concept of ***building back better*** will be adopted as part of climate adaption and mitigation, to allow communities recover from such disasters much more quickly.

INFRASTRUCTURE DELIVERY UPDATE

31. The Transitional Stabilisation Programme, which comes to an end on 31st December 2020, placed infrastructure spending and delivery as a major anchor of the country's economic development strategy.

32. Targeted investments of US\$26 billion in new infrastructure were envisaged during the Programme period, to be funded from increased fiscal development expenditures and the private sector.
33. The Table below shows the estimated outlays towards the various infrastructure sectors during the Programme period from a combination of fiscal, development partner and loans.

Development Expenditures under the Transitional Stabilisation Programme

SECTOR		2018	2019	2020	TOTAL
		US\$m	US\$m	US\$m	US\$m
Energy	Fiscal	138.2	66.4	0.9	205.5
	Dev. Partner	7.3	7.6	1.4	16.3
	Loans/other	217.3	32.9	10.6	260.8
	Total	362.8	106.9	12.9	482.6
Transport	Fiscal	372.4	854.3	121.5	1,348.2
	Dev. Partner		9.3	6.2	15.5
	Loans/other		45.7	27.7	73.4
	Total	372.4	909.3	155.4	1,437.1
ICT	Fiscal	19.6	276.3	18.9	314.8
	Dev. Partner			3.6	3.6
	Loans/other	16.8		5.5	22.3
	Total	36.4	276.3	28.0	340.7
Water & Sanitation	Fiscal	142.4	957.6	59.9	1,159.9
	Dev. Partner	21.2	18.0	16.0	55.2
	Total	163.6	975.6	75.9	1215.1
Health	Fiscal	18.0	27.0	5.1	50.1
	Dev. Partner		8.3		8.3
	Total	18.0	35.3	5.1	58.4
	Fiscal	107.4	337.6	15.6	460.6
	Dev. Partner	21.1	23.0		44.1
	Total	128.5	360.6	15.6	504.7

SECTOR		2018	2019	2020	TOTAL
		US\$m	US\$m	US\$m	US\$m
Education	Fiscal	14.6	127.0	4.2	145.8
	Loans/other	8.5	7.3		15.8
	Total	23.1	134.3	4.2	161.6
Irrigation	Fiscal	18.5	45.5	6.4	70.4
	Dev. Partner	8.0	3.0	14.0	25.0
	Loans/other			0.3	0.3
	Total	26.5	48.5	20.7	100.7
Other	Fiscal	23.4	73.5	392.8	489.7
	Dev. Partner	21.1	23.0		44.1
	Total	44.5	96.5	392.8	533.8
Grand Total		1,175.8	2,943.3	710.6	4,829.7

Note: Figures for 2020 have been converted to US\$ using the interbank rate at the end of each month.

34. Upscaling of investments in basic infrastructure services at community level was to be financed through the Inter-Government Fiscal Transfers allocation, being disbursed to provincial councils and local authorities as enshrined in the Constitution.

Projects Delivery Review

35. Despite the many hurdles encountered during the Programme period, planning and execution of projects improved, with some sectors now adopting a longer-term view to project planning, execution and delivery.
36. Roads have been constructed across Provinces, and a medium sized dam delivered every year, whilst other new infrastructure has been completed in most areas.



Newly established National University of Science and Technology Innovation Hub DNA Lab

37. The absence of long-term low-cost finance, limited private sector investment and weak performance of infrastructure public entities, continue to undermine public infrastructure investments and provision of public services, with the Budget remaining the main source of infrastructure finance.
38. Infrastructure projects are notoriously expensive to undertake, and once started, require stable financial flows to sustain ongoing works. . However, over reliance on tax revenues, which are susceptible to external shocks, results in unpredictable disbursements to projects, undermining execution.
39. On the back of limited investments and institutional implementation capacity constraints, supply of critical services in areas such as water,

electricity, rail and ICT have deteriorated, exacerbated by vandalism and theft of assets. A deliberate programme to retrofit most infrastructure assets is now required to restore provision of reliable services.

2020 Infrastructure Sectoral Performance

40. Infrastructure delivery during 2020 was largely affected by the impact of the Covid 19 pandemic, which resulted in the suspension of most project activities and disrupted inputs supply chains and access to sites for critical workers, following lockdown containment measures imposed by Governments worldwide.
41. Fiscal outlays under the 2020 Zimbabwe Infrastructure Investment Programme amounted to ZWL\$31.2 billion as at 30 September 2020.
42. Through the targeted approach and ring fencing of the limited resources on fewer projects, buttressed by the 100 day planning philosophy, execution and activity on the selected projects improved, particularly in the water and sanitation, transport and energy sectors.
43. Prioritisation has, however, meant that the stock of stalled projects, carried over from previous years, could not be significantly reduced as envisaged.

Transport

44. With road transport still the mode of choice in the country, implementation of projects under the Road Development Programme was prioritised with disbursements of ZWL\$7 billion as at 30 September 2020.

45. This includes ongoing works on the Harare-Beitbridge Road Upgrading Project, where ZWL\$5.8 billion has been availed to the 5 contractors undertaking works on the project. As at 20 November 2020, 115km had been completed against the 200km target set for the year.

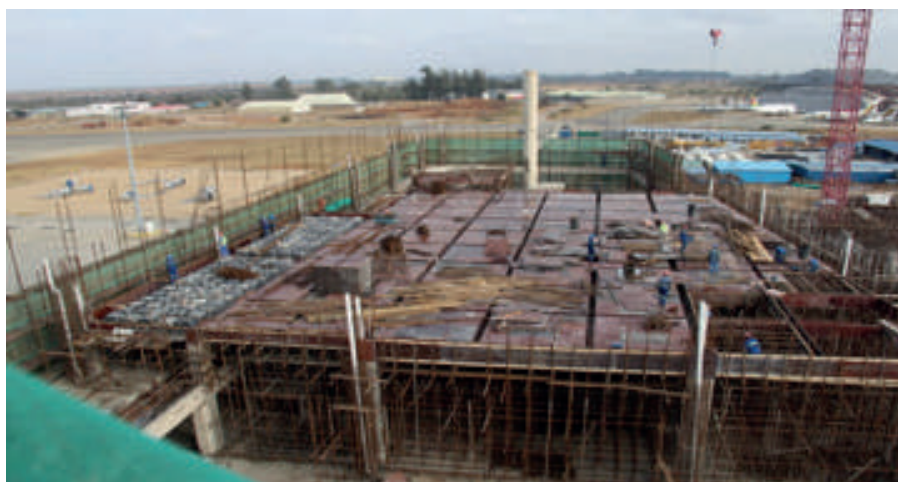


Completed section of the Harare-Masvingo-Beitbridge Road



Completed restoration works on the Kopa-Jopa Road in Chimanimani

46. Restoration works for Cyclone Idai damaged road infrastructure have largely been completed, with 85 km of road being re-gravelled, 63 km re-sealed, 40km rehabilitated as well as 9 bridges.
47. Overall progress on the R. G Mugabe International Airport Project is now at 30% for the terminal building and 80% for the runway. Shipping of material and equipment was, however affected by the Covid-19 pandemic lockdowns.



Ongoing Works at the R. G. Mugabe International Airport landside section

Water and Sanitation

48. Access to water and sanitation services remains a challenge for most settlements, particularly Harare and Bulawayo, where local authorities are failing to provide minimum services to residents, as traditional raw water sources dry up.
49. Government availed ZWL\$181.2 million to Harare to upgrade drawing of raw water supplies from Darwendale Dam, including replacement of 14

pumps at Warren Control Pump Station, with installation of the pumps now in progress. An additional ZWL\$167 million has been set aside for resumption of works at the Ruzivo Outflow Sewer project, that is critical to the safe discharge of sewer from the southern suburbs of the city.

50. With regards to Bulawayo City, the ZWL\$18 million availed has enabled ZINWA to rehabilitate and drill new boreholes at Nyamandhlovu and Epping Forest, that have improved raw water uptake to the city. This, however, still falls far short of demand, requiring substantial investments going forward.
51. A further ZWL\$3.2 billion was channelled towards construction of dams, with priority being given to five dams, in line with the objective of progressively increasing water storage capacity, as part of the country's drought proofing strategy.



Newly constructed Causeway Dam

52. His Excellency, the President, Cde E. D. Munangagwa, on 11 November 2020, commissioned Marovanyati Dam, which will supply water to Murambinda Growth Point as well as the 400ha Murambinda Irrigation Scheme. Following from this, Causeway Dam is expected to have been completed by December 2020.
53. During the year, the upgrading of Binga Water Treatment works and Murambinda Water Supply system were completed whilst works on other supply schemes such as Nyanga, Hauna, Collen Bawn, Parirewa and Mhangura are ongoing.



54. For the Rural Water and Sanitation subsector, ZWL\$287.9 million was disbursed to ZINWA and ZWL\$75.9 million to DDF for the drilling of at least 261 boreholes, covering quarantine and isolation centres, schools, including those communities facing acute water shortages.



Rehabilitated borehole at Howard High School, Mazowe District

Energy

55. Progress on the Hwange 7 & 8 Expansion Project is now at 37% complete, despite delays in the shipment of construction materials and equipment manufacture in China.
56. Government reviewed electricity tariffs during the year which should improve viability in the sector and crowd in new investments from the private sector.
57. The private sector has already invested in solar energy projects such as the Solgas Solar Power Plant in Hwange, Centragrid Solar Power Plant in Nyabira and Harava Solar Plant in Seke, which are under implementation.

Health

58. Government's immediate response to the unfolding Covid 19 health crisis was to rehabilitate and upgrade health facilities, procure equipment and ambulances in order to strengthen our capacity to prevent, detect and respond to the threat posed by the pandemic.
59. To date, ZWL\$500.7 million has been channelled towards construction and rehabilitation of isolation and treatment centres as well as equipment, including upgrading of non-COVID 19 health institutions that are meant to ensure continuity of care to citizens.



Wilkins hospital: COVID-19 Isolation ward

Education

60. Overall expenditure towards the education infrastructure sector was ZWL\$195.5 million, with ZWL\$88.4 million being invested at the basic education level and ZWL\$107.1 million for institutions of higher learning.

61. Construction works at all the 17 schools under the First Education Project, have been completed, including drilling of boreholes, whilst procurement of furniture, laboratory equipment, and computers is in progress.



Completed structures at Makumimavi Primary School

62. Our institutions of higher learning have embraced import substitution programmes, in the wake of Covid 19, with Treasury availing initial capital of ZWL\$33 million for production of PPEs, agro-industrial processing and manufacturing.

Institutional Housing

63. At least ZWL\$1.3 billion was spent towards the housing sector, covering purchase and construction of office space and institutional accommodation.
64. Progress on the New Parliament Building, being constructed at Mt Hampden with grant funding from China, has seen the six storey superstructure being completed, with remaining works being outdoor engineering, drainage, sewerage and internal finishes.

New Parliament Building-Eastern Elevation



65. Judicial court facilities received ZWL\$65.3 million mainly for Chinhoyi, Lupane and Mt Darwin Magistrates Courts, Bristol House Commercial and Cape to Cairo Masters' House.
66. The National Prosecuting Authority completed purchase of a building in Harare that will house institutions involved in combating crime and corruption, at a cost of ZWL\$248.5 million.
67. Support towards staff accommodation amounted to ZWL\$31.4 million, covering the Zimbabwe Prisons and Correctional Services (Chikurubi, Marondera, Mutimurefu, Chiredzi, Murehwa, Khami and Anju), Zimbabwe National Army (Dzivarasekwa and Imbizo) and Zimbabwe Republic Police (Tomlison Flats).



ZPCS Anju Staff Houses

ICT

68. The e-Government programme remains an important step in enhancing public service delivery and performance with ZWL\$242.4 million having been expended on various ICT projects countrywide.
69. Renovations to the CCS Building that will house the National Data Centre is now at 95% complete and is expected to complete before year end.



National Data Centre, housed at the Central Computing Services

Irrigation Development

70. Government has, this year invested ZWL\$210 million under the National Accelerated Irrigation Rehabilitation and Development Programme, which seeks to exploit irrigable potential in every district as part of our drought proofing strategy.
71. At least 80 projects, mostly A1 and communal schemes are under implementation, with potential to deliver 10 000ha.
72. In support of Government efforts, development partner support has enabled the completion of communal irrigation schemes as indicated in the Table below.

Development Partner Support towards Irrigation Development

Name of Scheme	Province	District	Ha	No of beneficiaries	Development Partner
Nyakomba	Manicaland	Nyanga	580	731	JICA
Bwerudza	Manicaland	Chipinge	95	190	EU/FAO
Musikavanhu	Manicaland	Chipinge	120	120	EU/FAO
Fuwe Panganai	Masvingo	Zaka	390	480	FAO/SDC
Lapache	Masvingo	Mwenezi	400		Tongat
River range	Mat South	Beitbridge	72	144	Cesvi/FAO/EU
Kwalu	Mat South	Beitbridge	105	120	Cesvi/FAO/EU
Shashe	Mat South	Beitbridge	120	240	Cesvi/SAFIRE
Grand Total			1,882	2,025	

73. Various financing facilities have been established for A2 to acquire agricultural equipment and improve infrastructure at acquired farms. These include the John Deere, Pedstock and Belarus facilities with ZWL\$231.3 million having been availed to facilitate implementation of the schemes.



Nyakomba Irrigation Scheme, Nyanga, Manicaland

Devolution

74. Disbursements under the Inter-Governmental Fiscal Transfers allocations amounted to ZWL\$703 million as at September 2020, in support of impactful projects being undertaken by local authorities at the community level, covering areas such as health, education, water and sanitation as well as roads, among others.
75. The Table below shows disbursements per province for the period to 30 September 2020.

IGFT Disbursements to September 2020

Entity	Operational Grant (ZWL\$)	Capital Grant (ZWL\$)	Total Grant (ZWL\$)	Disbursements to 30 September (ZWL\$)	Balance (ZWL\$)
Provincial Councils	146,600,000	439,800,000	586,400,000	2,463,640	583,936,360
Local Authorities					
Bulawayo Metropolitan	4,129,000	61,931,000	66,060,000	36,300,000	29,760,000
Manicaland	20,126,000	301,816,000	321,942,000	93,158,818	228,783,182
Mashonaland Central	13,203,000	197,962,000	211,165,000	48,621,800	162,543,200
Mashonaland East	16,222,000	243,276,000	259,498,000	79,914,833	179,583,166
Mashonaland West	20,029,000	300,341,000	320,370,000	90,059,894	230,310,106
Matabeleland North	8,629,000	129,386,000	138,015,000	41,597,724	96,417,276
Matabeleland South	15,897,000	238,374,000	254,271,000	66,550,297	187,720,703
Midlands	19,736,000	295,938,000	315,674,000	90,473,152	225,200,847
Masvingo	18,115,000	271,679,000	289,794,000	52,707,900	237,086,100
Harare Metropolitan	10,514,000	158,297,000	168,811,000	101,986,233	66,824,766
Total	146,600,000	2,199,000,000	2,345,600,000	701,370,652	1,644,229,347
Grand Total	293,200,000	2,638,800,000	2,932,000,000	703,834,292	2,228,165,707

NB: Current disbursements for Provincial Councils caters for sitting allowances

76. Whilst progress is being noted across most local authorities, concerns regarding utilisation of the resources will require strengthening of financial and project management systems including accountability mechanisms.

NATIONAL DEVELOPMENT STRATEGY (NDS1) 2021–2025

77. The New Dispensation's Vision 2030 charts a new development trajectory, meant to achieve Upper Middle Income status for the country by 2030.

78. The three-phased process to attain Vision 2030 outcomes, commenced with the Transitional Stabilisation Programme (TSP) (2018-2020),

whose policy measures and strategies focused on macro-economic and financial sector stability, meant to transform the economy towards a private sector led growth.

79. The National Development Strategy (NDS1) 2021- 2025, launched on 16 November 2020, is the second phase, focusing on consolidation and transformation, and is anchored on 14 key national priority areas that will address the country's development challenges.
80. Major infrastructure targets for the period to 2025 include the following:
- Increase power generation capacity from 2317MW to 3467 MW.
 - Construction of additional 280km of transmission and distribution infrastructure.
 - Increase access to potable water from 77.3% to at least 78.3% and water storage capacity from the current 15.423×10^6 mega litres to 16.979×10^6 mega litres.
 - Expand access to improved sanitation facilities from 70.22% to 77.32% in both urban and rural areas.
 - Increase the number of kilometres of road network that meet SATCC standards from 5% to 10% and number of kilometres in good condition from 14 702km to 24 500km.
 - Increase internet penetration rate from 59.1% to 75.42% and mobile penetration rate to 100%.

- Deliver 220 000 housing units for both rural and urban populations.
81. The above national targets will be achieved through implementation of the following strategies:
- Maintenance and repair of existing assets that will improve reliability of service and avoid costly rehabilitation programmes.
 - Completion of on-going and stalled projects.
 - Up-scaling of both, public and private sector investment in the provision and management of public infrastructure.
 - Capacitating implementing agencies to deliver and manage public services more efficiently. This includes implementation of recovery tariffs and other revenue measures that provide scope for maintenance and investment in additional capacities.
 - Planning, designing and implementing climate proofing and resilient infrastructure.

2021 INFRASTRUCTURE INVESTMENT PROGRAMME

82. Drawing from NDS1, the 2021 Infrastructure Investment Programme provides new impetus in the delivery of projects that support economic recovery and growth, protect lives and livelihoods, create jobs and stimulate productive investment.
83. Consistent with this objective, overall capital funding through the fiscus has been increased to 5.5% of GDP.

84. Direct engagements with Parliament, the provincial leadership and local communities, undertaken by Treasury, has identified projects that positively impact on the local economy and well being of people. The 2021 Infrastructure Investment Programme has embraced some of these projects within the resource limitations of the Budget, with implementation being executed through the respective MDAs.

Prioritisation Framework

85. The allocations to sectors takes account of existing capacities within implementing agencies to properly cost, deliver and manage projects and ensure resources are not tied up in projects that don't get implemented.
86. The first priority will be to address the immediate health crisis arising from Covid 19. This includes interventions that ensure the safe return of formal learning for schools, colleges and universities.
87. Restoration of services for critical enablers such as energy, water and sanitation, transport and ICT will also be prioritized as they are critical in driving economic recovery and well being of citizens.
88. Funding for ongoing projects nearing completion or where funding commitments have been made towards their execution will also take precedent in resource allocation, in order to sustain works and reduce standing time charges.

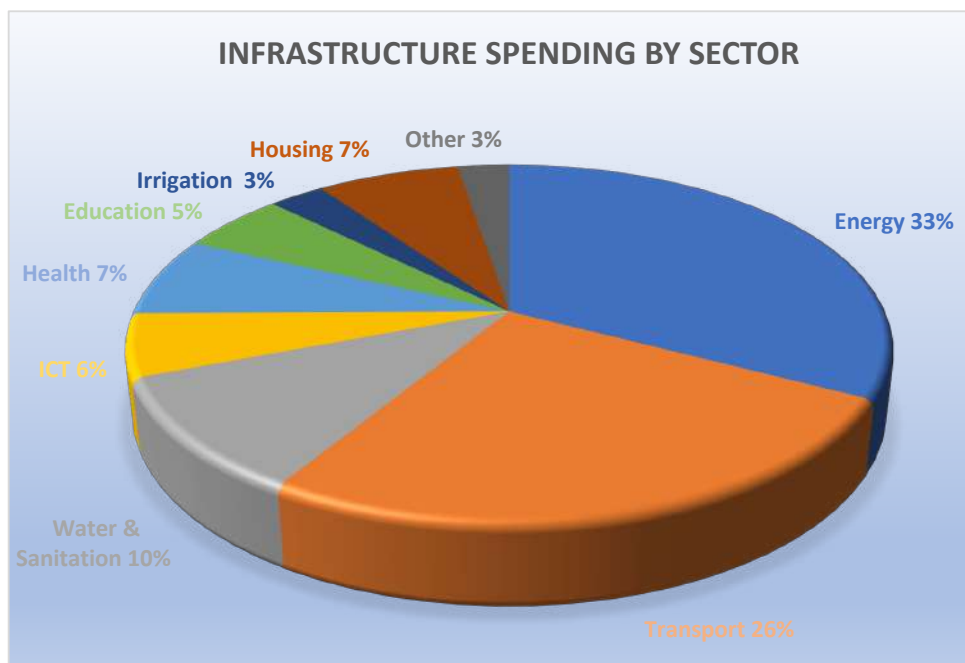
89. Noting that spending routinely falls short of required maintenance programmes, priority will also target rehabilitation and maintenance, as well as retrofitting of existing assets.
90. Overall support under the Infrastructure Investment Programme for 2021 amounts to ZWL\$139.8 billion, with distribution to sectors as indicated in the Table below.

Funding Mix for 2021 Priority Infrastructure Projects (ZWL\$)

SECTOR	FISCAL	STATUTORY	OWN RESOURCES	DEVELOPMENT PARTNERS	LOAN	TOTAL
Energy	1,037,610,000	1,218,000,000	8,700,000,000	2,472,170,000	32,370,000,000	45,797,780,000
Transport	24,832,000,000	7,140,000,000		629,000,000	3,825,000,000	36,426,000,000
Water & Sanitation	13,605,400,000			990,335,000		14,595,735,000
ICT	4,094,500,000	500,000,000	950,000,000		2,414,000,000	7,958,500,000
Health	9,375,700,000			238,000,000	425,000,000	10,038,700,000
Education	7,525,400,000					7,525,400,000
Irrigation	2,064,342,000			1,015,155,000	850,000,000	3,929,497,000
Housing	10,104,402,600					10,104,402,600
Other	3,640,000,000					3,640,000,000
TOTAL	76,079,354,600	8,858,000,000	9,650,000,000	5,344,660,000	39,884,000,000	139,816,014,600

91. Consistent with Government decision that projects with capacity to generate cash flows be funded from the market, ZWL\$39.9 billion will be mobilized through loans, mainly targeting the energy and transport sectors.
92. Parastatal's own resources and development partner support account for \$9.7 billion and \$5.3 billion respectively, whilst statutory funds, mainly from the Road Fund and Rural Electrification Fund (REF) amounts to ZWL\$8.9 billion.

93. The Chart below shows the distribution of the infrastructure outlay between the various sectors.



94. A detailed list of specific projects in each sector, to be implemented during 2021 is included under Annexure I below.

ENERGY

95. The quality of electricity supply remains a key challenge undermining economic activity and citizen well being. Local electricity production, at 71% of installed capacity, has been affected by lack of maintenance to the old generating plants, as well as underperformance of the transmission and distribution infrastructure.
96. The NDS1 for 2021-2025 envisages increasing internal capacity and supply of energy services to the economy, to be achieved through the following:

- Upscaling maintenance of energy assets.
- Complete ongoing energy projects and investments in additional capacities by increasing private sector participation in the energy sector.
- Scaling up of regional integration and power purchase agreements across SAPP members.
- Improve financial and commercial viability of power utilities.
- Diversification of the energy mix.
- Improved access to energy services.
- Demand management measures.
- Promotion of renewable energy and energy efficiency.

Sector Overview

97. Estimates by Zimstats show that national electricity access is at 47%, with rural areas currently at 19%, whilst urban areas access stands at 80%. The low access rates are due to the prohibitive costs of extending the national electricity grid to unserved areas.
98. Much of the electricity is produced at Kariba Dam Hydro-electric Power Station, with an installed capacity of 1050MW and average production of 535MW. Hwange Thermal Power Station is producing an average of 310MW from a potential capacity of 600MW. The three small coal fired stations of Harare, Bulawayo and Munyati currently have a dependable capacity of 13MW, 7MW and 6MW respectively.

99. Average domestic electricity generation during the first nine months to September 2020 was 690MW against demand of 1531MW, with the shortfall being largely met from imports.
100. The country has enormous potential for solar and mini-hydro plants still to be exploited. Private sector investments have steadily increased over the years with 162.81MW generation capacity installed of which 35MW is being added to the national grid by Independent Power Producers.
101. Biomass still accounts for 66% of energy use, with firewood being the most common domestic energy source that is used for cooking, lighting and heating for over 80% of the population in rural and peri-urban areas.

2021 Priority Interventions for the Energy Sector

102. Ongoing works at Hwange 7 & 8 Expansion Project, funded through a US\$997.7 million loan from China, remains a priority, with ZWL\$32.2 billion expected to be disbursed during 2021.
103. Through the Budget, an amount of ZWL\$900 million will cover local taxes for the project. An additional ZWL\$176 million has been set aside to cover legacy debt commitments due to the Zambezi River Authority.
104. The improved tariff levels, approved by Government, will enable ZESA to invest ZWL\$8.7 billion of own resources towards repair and maintenance of the old generating plants and other electricity infrastructure.

105. The diversification of the current energy mix will be enhanced through investments in solar energy projects, to be implemented by the Rural Electrification Agency (REA) and the private sector, with ongoing and new projects expected to contribute over 40MW to the national grid during 2021.
106. Electricity connection for new settlements and rural communities will be expanded through the Rural Electrification Programme, with ZWL\$863 million coming from the Rural Electrification Fund, to be complemented by fiscal resources amounting to ZWL\$137.6 million as indicated in the Table below.

2021 Rural Electrification Fund Interventions

Project Description	Amount ZWL\$ millions			Total ZWL\$
	Fiscal	REF Levy	Development Partners	
Grid extension to 330 public institutions and community groups		863,000,000		863,000,000
Construction of 8 biogas digesters and training of 128 biogas digester builders	12,000,000	15,000,000		27,000,000
Establishment of 21 micro solar systems and installation of 3 solar min grids	125,610,000	305,747,320		431,357,320
Construction of a grid connected 5MW PV plant		34,215,320	508,460,680	542,676,000
Total	137,610,000	1,217,962,640	508,460,680	1,864,033,320

107. Support for ongoing works under the Zimfund Emergency Power Rehabilitation Project will receive ZWL\$630.7 million, mainly for Phase I and Phase II consolidation works.

108. Furthermore, works on the Alaska-Karoi Transmission line, supported through a grant from the African Development Bank, will be sustained through disbursements amounting to ZWL\$1.2 billion during 2021.

WATER SUPPLY AND SANITATION

109. Across the country, raw water sources are drying up as a result of climate change and anthropogenic pollutant factors, threatening lives and livelihoods of affected communities.
110. Inadequate access to water and sanitation services is a developmental challenge, reinforcing disparities between communities and impacting on the quality of life for citizens. The Covid 19 pandemic has compounded the vulnerability of populations with limited access to WASH services, given the disproportionate impact of containment measures on the poor.
111. The absence of reliable water supplies is also impacting on the productive sectors of the economy, particularly agriculture and manufacturing.
112. Government, under NDS1, therefore seeks to close the gap between water supply and demand, including investments that meet the basic sanitation requirements of citizens.
113. Strategic investments will be targeted at fully exploiting existing water sources, including development of new raw water sources that meets current demand as well as support future growth trends.



ZINWA personnel drilling a borehole in Chitungwiza

114. Government’s commitment towards recovery of the sector during the NDS1 period is summarised in the Table below.

Commitments	Parties to the Commitment
Develop, launch & roll-out a national strategy to reduce open defaecation from 21.7 to 9% by 2025	Line Ministries, Civil Society, Development Partners, Research and Learning (R&L) Institutions, Local Authorities (LAs)
Achieve 80% access to potable water by 2025	LAs, Private Sector, Development Partners, Civil Society, R&L Institutions and Line Ministries
Sustainable public finance-led funding of the sector over the two National Development Strategy cycles (2021-25 and 2026-30)	Line Ministries including the Ministry of Finance, Development Partners and Local Authorities
Fully fund the building of efficient regulatory institutions, devolved delivery and coordination capacity by 2022	Line Ministries, Development Partners, Civil Society and Local Authorities

115. Interventions to meet the above commitments will include the following:

- Strengthening capacities for water resources management and development.
- Rehabilitation and maintenance programme to remedy deficiencies

in existing water infrastructure such as dams, treatment plants and distribution networks.

- Expand availability of raw water sources, through construction and completion of ongoing dam projects.
- Analytical studies to assess risks to public safety, extent of water losses, siltation and capacity building for institutions with responsibilities for water resource management.
- Demand management measures and implementation of full cost recovery water tariffs.

Water and Sanitation Sector Management Framework

The water and sanitation sector is organized in terms of responsibilities for service provision as follows:

- **Water Resources Management**, managed through the Ministry of Lands, Agriculture, Water and Rural Resettlement with technical support from ZINWA. The country is divided into seven catchments and is based on the seven major river basins namely Save, Runde, Mzingwane, Gwayi, Sanyati, Manyame and Mazowe.
- **Urban water supply and sanitation**, where the 32 urban local authorities have statutory responsibilities (as service authorities) to provide water and sanitation services to their communities. ZINWA supplies raw water with the respective councils being responsible for treatment, distribution, billing and collection. ZINWA also provides clear water to 534 other stations mainly small towns, growth points and other strategic national installations.
- **Rural Water Supply and Sanitation**, managed through the Inter-ministerial National Action Committee, with Rural District Councils, the District Development Fund and ZINWA being the lead agencies, while the Ministry responsible for water, chairs and coordinates the sector. The entities ensure the right of access to basic water and sanitation services for communities. Of late, funding is channeled through the Budget, direct disbursements by development partners and the Inter-Governmental Fiscal Transfers allocation.
- **Irrigation services**, mainly managed through the Ministry of Lands, Agriculture, Water and Rural Resettlement with responsibilities shared between the various technical departments within the Ministry.

Sector Overview

116. The Multiple Indicator Cluster Survey (MICS, 2019) indicates slow progress on WASH coverage for both rural and urban areas. Access to improved sanitation rose by 7.1% from 61.7% in 2014 to 68.8% in 2019.

117. Access to improved water supply on the other hand, rose marginally from 76.1% to 77.1%, whilst open defecation fell by 10% from 31.7% to 21.7% and households with hand washing facilities with soap and water rose by 15.3% from 55.8% to 71.1% over the same period.
118. The foregoing, is a red flag on the sector's current performance, which has also been impacted by climate change related emergencies, such as periodic cyclones, droughts and floods. Also worth noting is that WASH coverage and quality is poorest where poverty is highest, and hence, reinforcing developmental disparities.
119. Overall support for dam projects amount to ZWL\$10.7 billion, with focus on Gwayi Shangani and Chivhu dams that are targeted for completion during 2021.
120. Whilst both Marovanyati and Causeway dams have been physically completed, the provision covers for outstanding certificates, irrigation conveyancing infrastructure and other minor works on the projects.
121. Execution on other dams such as Bindura, Dande dam and tunnel, Tuli Manyange, Semwa and Silverstroom will be sustained with funding from the fiscus, including commencement works on Kunzvi Musami, Ziminya and Vungu dams.

122. Allocations to dam projects are as indicated in the Table below.

2021 Dam Construction Projects

PROJECT	LOCATION	PROGRESS (%)	2021 TARGETED WORKS	2021 ALLOCATION ZWL\$
Bindura Dam	Mashonaland Central	38	Foundation excavations, grouting, back filling to original river bed level and relocation of HT lines on the left bank of saddle dam	314,200,000
Causeway Dam	Mashonaland East	92	Outstanding certificates, irrigation conveyancing and other minor works	217,000,000
Chivhu Dam.	Mashonaland East	37.5	Construction of spillway, outlet works, main dam embankment, water treatment plant, pipeline and reservoir	2,085,000,000
Dande Dam	Mashonaland Central	20	Grouting on the main dam foundation, outlet works and spillway. Blasting 4km out of the 7km tunnel	300,000,000
Gwayi-Tshangani Dam	Matabeleland North	39	Construction of 18m of the dam wall, installation of precast concrete formwork for drainage galleries, construction of spillway apron and outlet works tunnel. Construction of 46m of the dam to reach full height of 72m, construction of power plant and outlet works	4,490,400,000
National Matabeleland Water Project-Pipeline	Matabeleland North	0	Detailed designs, procurement of Contractor and commencement of works	535,000,000
Water use master plans	Nstional	0	Development of water use master plans	200,000,000
Marovanyati Dam.	Manicaland/ Buhera	99	Outstanding certificates, irrigation conveyancing and other minor works	200,000,000
Semwa Dam	Mashonaland Central	38	Construction of the diversion tunnel, cofferdam, cut-off trench and mobilisation for RCC wall equipment and crushing of concrete aggregates at site	750,000,000
Silverstroom Dam	Mashonaland Central	2	Relocation of HT lines and foundation excavation	350,000,000
Tuli-Manyange	Matabeleland South	5	Site Establishment and foundation excavation	400,000,000
Kunzvi Musami	Mashonaland East	0	Site establishment and construction of access road	250,000,000
Ziminya Dam	Matabeleland North	0	Procurement of Contractor, site establishment and construction of access road	250,000,000
Vungu Dam	Midlands	0	Procurement of Contractor, site establishment and construction of access road	250,000,000
Dam Safety	National	0	Inspection of 5 dams	40,000,000
Total				10,631,600,000

123. Completion of Gwayi Shangani dam is being accorded top priority with an allocation of \$4.5 billion. Completion of the dam would mark the first phase of the National Matebeleland Zambezi Water Project, meant to provide a long term solution to the water challenges facing the City of Bulawayo, whilst also creating a green belt that will benefit communities along the pipeline.
124. Furthermore, Government has allocated ZWL\$535 million to ZINWA to enable the parastatal immediately undertake detailed designs, including commencement of works on the conveyancing infrastructure to Bulawayo.
125. In order to fully exploit the full potential of existing water bodies, Government has allocated ZWL\$200 million towards water use master plans for Gwayi Shangani, Marovanyati, Dande, Semwa, Kunzvi and Causeway dams that will ensure communities immediately benefit from such investment.
126. Through the private sector, project development activities are progressing for dam projects being implemented under the Public Private Partnership arrangement, such as Muda-Nyatsime, Runde Tende, Glassblock, Kondo-Chotowe, being coordinated through the Zimbabwe Investment and Development Agency.

Urban water and sanitation

127. The water supply and sanitation in most urban centres such as Harare, Bulawayo has become desperate, and necessitates urgent Government intervention in order to contain the situation.
128. Investment in new raw water supply sources, complimented by rehabilitation and upgrading of existing water and sewer infrastructure has become more urgent in order to restore normal services.
129. In this regard, the 2021 Budget has set aside an allocation of ZWL\$700 million, under conditional grants, for water improvement works in Harare, Bulawayo, Marondera, Chegutu and Rusape.
130. The African Development Bank will channel ZWL\$491.6 million under the Bulawayo Water and Sewerage Services Improvement Project that should ensure continuation of works under the project.
131. Through the Inter Governmental Fiscal Transfers allocation, Local Authorities are expected to set aside additional resources for water and sewer projects at community level.
132. Restoration of sustainable water and sewer services in most of our urban local authorities will require a deliberate programme to capacitate these entities manage the water and sanitation systems more efficiently. This will include putting in place effective revenue collection systems as well as interventions aimed at reducing water losses and other disruptions to the conveyancing systems.

Water Supply Schemes for Small Towns and Growth Points

133. The absence of adequate and reliable water supplies for both human and animal use is one of the main limiting factors affecting economic and social development for designated Rural Growth Poles.
134. As part of the measures to stimulate economic activity and improve living conditions for communities in such areas, the 2021 Budget has provision of ZWL\$172 million for the upgrading of water supplies in 17 small towns and growth points as indicated in the Table below.

2021 Water Supply Schemes for Small Towns and Growth Points

PROJECT NAME	2021 PLANNED WORKS	2021 BUDGET ALLOCATIONS ZWL\$
Goromonzi Water Supply	Rehabilitation of the breached Chinyika Dam trailing wall, pump station and 100m ³ /hr conventional treatment plant.	10,900,000
Nyanga Water Supply	Raw water gravity main, pumpsets and water reticulation network extended	9,900,000
Gokwe Water Supply	Construct a 7km water reticulation pipe network for Mafungautsi	5,300,000
Hauna Water Supply	Raw water gravity main, pumpsets, valves replaced, clear water storage reservoirs constructed, water treatment plant and clear water pumping mains	8,300,000
Collen Bawn Water Supply	Raw water line, sedimentation tank, clear water sump and 8km pipeline	8,200,000
Parirewa Water Supply	Construction of a pump station, treatment plant and reservoir	14,200,000
Filabusi Water Supply	Reservoir, 15km main reticulation	5,800,000
Inyati Water Supply	Construction of treatment plant, reticulation extension and standby pumping sets	7,500,000
Dete Water Supply	Rehabilitate and Equip 6 boreholes, reticulation extensions x 20km and 250m ³ brick reservoir	8,500,000
Rushinga- Chimhanda Water Supply	10km long water pumping mains from Chimhanda treatment works to Rushinga and additional water reservoir	
Dema Water Supply	Construction of treatment plant, reservoir, 3km pumping mains, booster station	10,100,000
Nyabira Water Supply	Completion of treatment plant, ground reservoir, booster station and offices. Electrify two water distribution points and reticulation extension to 500 stands	12,400,000
Mberengwa Water Supply	Construction of storage reservoir at Mberengwa turn off, reticulation extension, 1x construction of operators' houses	7,300,000
Litumba Water Supply	Construction of 20km pumping main from Beitbridge to Lutumba, reservoir	12,400,000
Mhangura Water Supply	Construction of raw water, abstraction station, rehabilitation of treatment plant, intake works, waste water stabilisation ponds, Construction of 1km sewer trunk mains, Construction of manholes	15,900,000
Checheche Water Supply	Upgrading of treatment plant, reticulation extension, installation of pump sets, 6km pumping main	6,000,000
Jerera Water Supply	Construction of Storage reservoir, Reticulation extension, Upgrading of treatment plant and Installation of pump sets	15,000,000
		172,000,000

Rural WASH

135. Improving coverage and access of water and sanitation services for rural communities is critical in improving productivity and reducing the incidence of diarrhoeal diseases.
136. Successive droughts have diminished yields of boreholes with others drying up, thereby exacerbating the water security situation for affected communities. A targeted programme to restore water supplies in rural areas has, therefore, become critical.
137. In this regard, the 2021 Budget has set aside ZWL\$262 million to ZINWA and ZWL\$328 million to DDF for procurement of 10 and 8 drilling rigs respectively that should improve their presence in every province as we seek to increase access to water for the rural communities.
138. An additional amount of ZWL\$391 million and ZWL\$350 million has been allocated to DDF and ZINWA respectively, for the borehole rehabilitation and maintenance programme, to be complemented by support from Development partners.
139. Furthermore, the World Bank is supporting Cyclone Idai recovery efforts, targeting interventions in the water sector in Chimanimani.
140. Furthermore, local authorities are expected to prioritise water supply interventions through funding from the Inter-Governmental Fiscal Transfers allocation.

TRANSPORT

141. Transport infrastructure development will enhance competitiveness of goods and services in regional and overseas export markets, as well as improve connectivity for people when they undertake productive activities and access social services.
142. Cross-border infrastructure should seamlessly link to national infrastructure networks, down to District and Ward levels, providing access to productive centres and markets for unserved communities.
143. Within COMESA and SADC, our national trunk road networks provides critical nodes for the North-South and Beira Development Corridors, ensuring smooth flow of traffic to regional sea ports.
144. Zimbabwe has also adopted and implemented SADC standards in road construction and maintenance, with projects being aligned to the SADC Infrastructure Master Plan, COMESA Transport and Communication Strategy as well as the African Union Program for Infrastructure Development (PIDA) that requires Member States to implement projects within agreed priorities and stipulated timeframes.

Sector Overview

145. The main transport modes that serve the Zimbabwean economy of roads, railways, aviation and inland waterways all face challenges arising from lack of investment, climate change and the COVID 19 pandemic.

146. The **road network** of approximately 91,667 kms requires US\$3 billion in new investments to enable recovery of the asset and address congestion in major cities, toll gates and at border posts.
147. Road authorities will also require recapitalization in the form of additional technical staff and equipment.
148. The **rail network** of approximately 3,145 kilometres, with a design capacity of 18 million tonnes per annum has fallen to a fifth of its capacity due to the poor condition of traction and rolling stock. Theft and vandalism of track equipment has also been prevalent, with the system deteriorating more than any other railway network in the region.
149. The **aviation sub-sector**, comprises ten airports, and more than 200 minor airports and aerodromes of diverse standards and capacity, some of which urgently require upgrading. Uncertainties brought about by the pandemic is also affecting tourism and travel who are the main users of the facilities.
150. Furthermore, air navigation, surveillance, communication systems as well as weather installations are inadequate to meet the needs of industry, and hence, require urgent upgrading.
151. Overall support to the transport sector during 2021 amounts to ZWL\$36.4 billion, mainly targeting ongoing works in the roads sector, ZWL\$31.6 billion, aviation ZWL\$4.57 billion with ZWL\$250 million being set aside for the rail sub-sector.

Roads

152. Communities and leadership in provinces have identified road projects that positively impact on people's lives with some such projects having been embraced under the Road Development Programme.
153. The overall support to the Programme of during 2021 of ZWL\$31.6 billion comprises funding from the fiscus, ZWL\$24.1 billion; Road Fund interventions, ZWL\$6 billion and development partner support, ZWL\$629 million.



Restoration works in progress on the Kopa-Jopa Road in Chimanimani

154. Details on the specific roads and location are as per Annexure I.
155. The Harare-Beitbridge Project takes the bulk of the resources with an allocation of ZWL\$10 billion, meant to sustain works on the project that has a completion deadline of 2022.

156. Under the North South Corridor Improvement Project, the Japanese Government will invest US\$20.6 million to upgrade 6km on the Harare –Chirundu Road, Makuti-Hellsgate Section. During 2021, an amount of ZWL\$527 million will be disbursed towards the project, with Phase I expected to be completed during 2021.
157. Furthermore, the African Development Bank is providing support towards rehabilitation of damaged road infrastructure in Chimanimani to the tune of ZWL\$102 million during 2021, under the Zimbabwe Idai Recovery Project.



Upgrading works on the Harare–Chirundu Road

158. Other regional trunk road projects, implemented through the Department of Roads, have an allocation of ZWL\$12.9 billion, targeting upgrading works for identified roads in provinces.
159. Regravelling of feeder roads and related bridge construction works have been allocated ZWL\$928 million, to be implemented through the District Development Fund.

160. The four road authorities will receive additional funding for road maintenance works, amounting to ZWL\$4.8 billion, through the Road Fund managed by ZINARA.
161. Through the Inter-Governmental Fiscal Transfers allocation, local authorities will channel resources for construction and maintenance of badly damaged roads under their purview.
162. Consistent with the thrust to increase local content in the delivery of road projects, contractors will be required to use local resources within communities they operate under such as labour and materials, that way, providing incomes and stimulating economic activity at the local level.

Decongesting of Urban Centres

163. Most urban centres face traffic congestion challenges due to the increase in vehicular traffic and inadequate infrastructure, such as bypasses to guide traffic away from city centres.
164. The 2021 Budget has provision of ZWL\$1.7 billion for decongesting specific routes in Harare and Bulawayo such as Mbudzi Overpass Detours, Lomagundi Road and Esigodini Road.
165. A comprehensive plan is now required to identify and implement road infrastructure improvements required to address current transport

bottlenecks in our urban centres. Government is developing a plan, targeting at Harare, including innovative funding options to finance road infrastructure improvements in the city.

Road Fund

166. The core mandate of the Road Fund, managed through ZINARA, and as defined under the Roads Act [*Chapter 13:18*] is to collect road user fees such as fuel levy, toll fees, transit fees and abnormal or overload fees that are disbursed to road authorities to undertake road maintenance, rehabilitation and upgrading.
167. The Table below shows disbursements by the Fund towards specific roadworks to the four road authorities during 2020.

2020 Road Fund Interventions

ROAD AUTHORITY	2020 ALLOCATION ZWL \$	DISBURSEMENTS TO OCTOBER 2020 ZWL\$	PERCENTAGE
Rural District Councils	117,759,999	84,893,333	72%
Urban Councils	158,719,999	134,481,714	85%
Department of Roads	143,360,080	113,175,815	79%
District Development Fund	92,160,000	92,000,000	100%
Sub Total Direct Road Authorities	512,000,078	424,550,862	83%
Special Projects		8,705,776	
Emergency Projects (DoR)		60,000,000	
Total	512,000,078	493,256,628	96%

168. Despite the central role of the Fund in maintaining the country's road network in drivable condition, such works have stalled due to reduced disbursements to road authorities and the COVID 19 pandemic.



Roadworks being undertaken in Mutare's CBD, funded by the Road Fund

169. Inflows into the Fund have been undermined by low user charges, revenue leakages, fraud and incidences of abuse, among other issues.
170. The motoring public continue to encounter inordinate delays at toll gates, resulting in congestion which ultimately affect the smooth flow of traffic and incentivizing motorists to avoid some toll gate plazas.
171. During 2021, the Fund will disburse ZWL\$4.8 billion to all road authorities as follows:
- Department of Roads, ZWL\$1 349 million.
 - District Development Fund, ZWL\$867 million.
 - Urban Local Authorities, ZWL\$1 494 million.
 - Rural District Councils, ZWL\$1 108 million.

172. To address congestion and improve on revenue collection, an amount of ZWL\$1.1 billion has been set aside from the Fund for upgrading and construction of tollgates as indicated in the Table below.

2021 Tollgate Upgrading Programme

NAME OF TOLLGATE	TARGETED WORKS	AMOUNT ZWL\$
Norton	Construction of structures to accommodate the addition two lanes, back offices, lighting and installation of toll fees collection system	162,063,000
Skyline	Relocation of toll gate to a new site covering six lanes	208,300,000
Esigodini	Upgrading to a standard toll plaza with six lanes	208,300,000
Mushagashe	Upgrading to a standard toll plaza with six lanes	208,300,000
Mupfurudzi	Upgrading to a standard toll plaza with four lanes	104,000,000
Dema	Upgrading to a standard toll plaza with four lanes	104,000,000
Coleen Bawn	Construction of a new toll plaza with four lanes	104,000,000
Total		1,098,963,000

Rail Transport

173. A good railway network connects major economic centers, providing low cost transportation for bulk raw materials, finished goods and passengers.

174. Years of under-investment in maintenance by the National Railways of Zimbabwe has seen freight carriage falling from a peak of 18 million tonnes in 2007 to current averages of 3 million tonnes per annum, thereby putting pressure on the country's road network.

175. The NDS1 has, therefore, prioritised the following interventions during the strategy period.

- Recapitalisation of NRZ, focussing on refurbishment and replacement of rolling stock, signalling equipment, ICT and track infrastructure;
 - Developing a bankable rail infrastructure development plan;
 - Implementation of cost-based user fees aligned to market fundamentals in order to improve performance and allow for re-investment in additional capacities;
 - Rebuilding confidence through Service Level Agreements (SLA) with customers;
 - Capacity building, including training of artisans and other key personnel in order to improve performance.
176. During 2021, Government targets to complement the parastatal's own resources with ZWL\$250 million being set aside for urgent maintenance services.

Airports

177. A key objective of Government interventions in the aviation sub-sector is to meet the minimum requirements of the International Aviation Organisation (ICAO) that enables the country move from category 2 to category 1 and open the country to increased access to international market.
178. This would entail rehabilitation and upgrading of civil aviation facilities, with the ongoing works at the R. G. Mugabe International Airport being the most significant.

179. Airspace management and safety will be prioritized through procurement and installation of the requisite equipment, leveraging on CAAZ and the newly formed Airports Company of Zimbabwe (ACZ)'s cash flows.



R. G. Mugabe International Airport: Construction of the new A380 apron next to domestic terminal

180. The aviation sector faces an uncertain and rocky period ahead given the impact of the Covid 19 pandemic on travel and the hospitality industry in general.
181. Figures released by the International Civil Aviation Organisation (ICAO) indicate that, as at 2 October 2020, reductions of air passenger traffic (both international and domestic) ranging from 59% to 62% in 2020 with an estimated loss of over US\$104.5 billion of airport revenues in 2020.
182. Prospects of recovery of the sector hinges on the duration and magnitude of the outbreak, development of effective and accessible vaccines, impact of containment measures being implemented by countries, the degree

of consumer confidence in air travel as well as economic conditions, among other issues.

183. Domestically, the financial health of CAAZ and ACZ and their ability to maintain and upgrade infrastructure will, therefore, also largely depend on the recovery of the aviation and tourism sector in general.
184. With regards to the R. G. Mugabe International Airport Upgrading Project, an amount of ZWL\$3.8 billion will be disbursed through the loan during 2021, targeting works on the terminal building, the VVIP pavilion, installation of navigation and lighting equipment. The eight month delay on the project due to Covid 19 has resulted in the completion date being moved from 2021 to 2022.
185. Through the Budget, an amount of ZWL\$200 million will be channelled towards construction of the tower at the J. M. Nkomo International Airport.
186. Consistent with the Tourism Recovery Plan, that focuses on promoting domestic and regional tourism, an amount of ZWL\$550 million has been set aside for the rehabilitation and upgrading of Kariba, Grand Reef and Buffalo Range Airports.

Border Posts

187. Infrastructure development is central in improving border operations, processes and procedures that facilitate intra-regional trade as well as movement of people, goods and services.

188. Government has identified the following as key in expediting the movement of goods and people as well as reducing transport costs at the ports of entry:
- Government agencies responsible for border controls need to operate in a coordinated manner to minimize duplications and redundancies.
 - Border crossing procedures should be effective and facilitative and relevant to the prevailing circumstances.
 - ICT systems that allow for simplification of documentation, border management and modernisation of customs, immigration, and related services.
 - Facilities such as offices, operational equipment, warehouses, and parking that is appropriately functional.
189. In support of the above objectives, the the NDS 2021-2025 targets the establishment of the National Port Authority to oversee the efficient management of our ports of entry.
190. Overall support towards the upgrading of ports of entry during 2021 amounts to ZWL\$1.5 billion, targeting infrastructure and other facilities at ports of entry.

Beitbridge Mordenisation Project

191. The Concession Agreement for the upgrading and modernisation of Beitbridge Border Post was signed between Government and

Zimborders Consortium on 28 of June 2018 under a Build Operate Transfer arrangement.

192. The scope of the project includes upgrading of the border post with new terminal buildings and commercial facilities, construction of a fire station, upgrading of sewer and water reticulation for Beitbridge Town including a water reservoir, plant and animal quarantine facility and construction of staff housing for border agencies.
193. Progress towards financial close is expected to be complete during the last quarter of the year, which will also ensure works on the project proceed in earnest.
194. In the meantime, construction works commenced in March 2019 using equity funding, with the EPC contractor, Raubex Group Ltd, having undertaken construction of the maintenance building, road for light commercial vehicles, civil works on the access routes and freight warehouse platform.

HOUSING DEVELOPMENT

195. The Zimbabwe National Human Settlements Policy (ZNHSP), seeks to address challenges inherent in the sector as well as explore models of delivery that will fast-track housing delivery in line with the NDS1 target of delivering 220 000 housing units by 2025.

196. Availability of off-site and on-site services for informal settlements, high cost of building materials and housing finance are some of the major challenges facing the sector.
197. Re-establishing sanity and order within the built environment requires role clarity for all stakeholders and enforcement of rules along the housing sector value chain.
198. In this regard, regularisation and sanitisation of informal settlements will be undertaken to rectify past mistakes and ensure we build back better. This includes provision of the requisite social amenities and relocation of affected homeowners, where necessary, which should be effected within Constitutional provisions and applicable protocols.
199. Government will no longer allocate unserviced and unplanned land to housing co-operatives and individuals, with approval for construction of new settlements being based on provision of adequate basic infrastructure services.
200. Government has also adopted the densification model in housing delivery, including when implementing urban regeneration programmes in order to maximise on available land and existing infrastructure services.

Policy Interventions

201. In line with the Policy's vision of "***well-planned and well-governed Zimbabwean settlements***", all state-land earmarked for human

settlements will be managed by the Ministry responsible for human settlements development and respective local authorities. Each developer will prepare and submit Settlement Plans and Development Concepts for approval to the Local Authority.

202. Off-site infrastructure provision will remain the responsibility of Government, with local authorities providing on-site infrastructure.
203. At least 40% of land for human settlements development will be reserved for construction of flats whilst subdivision of low density stands will be encouraged.
204. Model homesteads will be developed and accessed by citizens including piloting of planned rural settlements, as well as provision of appropriate social amenity facilities.
205. Construction of housing on wetlands is prohibited, and environmental and climate change policies, laws and standards will be enforced vigorously.
206. Overall support to the sector during 2021 amounts to ZWL\$ million, covering institutional and other housing development interventions.

Institutional Housing

207. The current structure of the Civil Service career ladder and function allows for promotion and switching of roles and places of work that entail moving away from a person's home station.

208. In such cases, finding appropriate Government accommodation near the workplace is always difficult, as available stock is falling far short of requirements, given the sheer size of the workforce.
209. Even under such circumstances, some Government houses are being sold to sitting tenants.
210. As part of measures to alleviate this challenge, Government pool houses and institutional housing will no longer be sold to sitting tenants or constitute part of the retirement package for a public official.



ZDF Dzivarasekwa Housing Project

211. The 2021 Budget has a provision of ZWL\$10 billion towards construction of institutional accommodation covering both office space and institutional houses as indicated in the Table below.

2021 Housing Development Programme

PROJECT TITLE	PROJECT NAME	2021 ALLOCATION ZWLS
Composite offices and other offices	Lupane Composite Office	212,055,000
	Mutoko Composite Office	77,945,000
	Hwedza Composite Office	100,000,000
	District Registry Offices	113,530,000
	Court Infrastructure	610,933,000
	Rehabilitation of other Government buildings	2,472,690,400
	Sub-Total	3,587,153,400
Security Services Institutional Accomodation	Special Services	670,000,000
	Zimbabwe Republic Police	627,484,000
	Defence	1,263,617,000
	Zimbabwe Prisons and Correctional Services	512,500,000
	Sub-Total	3,073,601,000
Social Housing	Kariba-Kasese houses	101,000,000
	Crown Lands houses	284,000,000
	Hwange Empumalanga houses	297,500,000
	Binga houses	8,500,000
	Chigwizi houses	29,000,000
	Sanitisation of informal settlements	42,500,000
	Chimanimani Houses	100,000,000
	Tsholotsho houses	50,000,000
Sub-Total	912,500,000	
Other Institutional Accomodation	State Residences	600,000,000
	Youth Training Centres	326,400,000
	Immigration Management Staff Accomodation	83,040,000
	Rehabilitation of community infrastructure	500,000,000
	Staff accommodation for health institutions	472,000,000
	Beitbridge houses	595,000,000
	Rehabilitation of Children's Homes and Rehabilitation Centres	47,639,000
	Spatial Plans	127,540,000
	Rehabilitation of Embassies	1,100,000,000
	Staff accommodation for Agriculture institutions	1,955,824,000
	Sub-Total	5,807,443,000
Other	Construction of National Transport Management Centre	125,000,000
	Construction of Beitbridge VID Deport	50,000,000
	Sub-Total	175,000,000
	Total	9,968,544,000

Social Housing

212. Provision of social housing is critical in providing affordable decent housing to low income earners, those affected by a catastrophe, such as cyclones or those entering the job market from college. Social housing can also be seen as a remedy to housing inequality.
213. In this regard, the 2021 Budget has a provision of ZWL\$912 million for construction of low cost houses in areas such as Kasese and Empumalanga housing projects in Kariba and Hwange respectively as well as for communities that were affected by floods in Chimanimani and Tsholotsho.

Spatial Planning

214. Land use and development decisions on settlements must promote a harmonious relationship between the built and the natural environment, whilst ensuring sustainable land development over the long term.
215. On account of the Covid pandemic, activities towards development of targeted spatial plans could not be undertaken as envisaged. However, development of the Tokwe Murkosi Master Plan and for the New City commenced during the year and is expected to be complete in 2021.
216. In this regard, the 2021 Budget has a provision of ZWL\$202 million in support of the development of spatial plans for the following:
- Tugwi Mukorsi, ZWL\$50 million.
 - New City, ZWL\$123 million.

- Masvingo South Regional Plan, ZWL\$5 million.
- Victoria Falls Zambezi Regional Plan, ZWL\$11 million.
- Harare Metropolitan Regional Plan, ZWL\$13 million.

Civil Service Housing Fund

217. The civil service fund schemes, managed by Treasury and the Ministry of National Housing and Social Amenities remain a major non-monetary benefit accorded to public officials, enabling them acquire own accommodation on a cost recovery basis.
218. Demand from public officials has remained high, and hence, the need to capacitate the Fund with additional resources.
219. In this regard, the 2021 Budget has set aside an amount of ZWL\$300 million and ZWL\$500 million, as capitalisation, for the senior officers and junior schemes respectively.

DIGITAL ECONOMY

220. Technology is the new frontier driving change and transformation within economies and communities. Innovation is transforming and disrupting traditional industries and creating new ones that are driving economic growth and providing platforms for societies to connect.

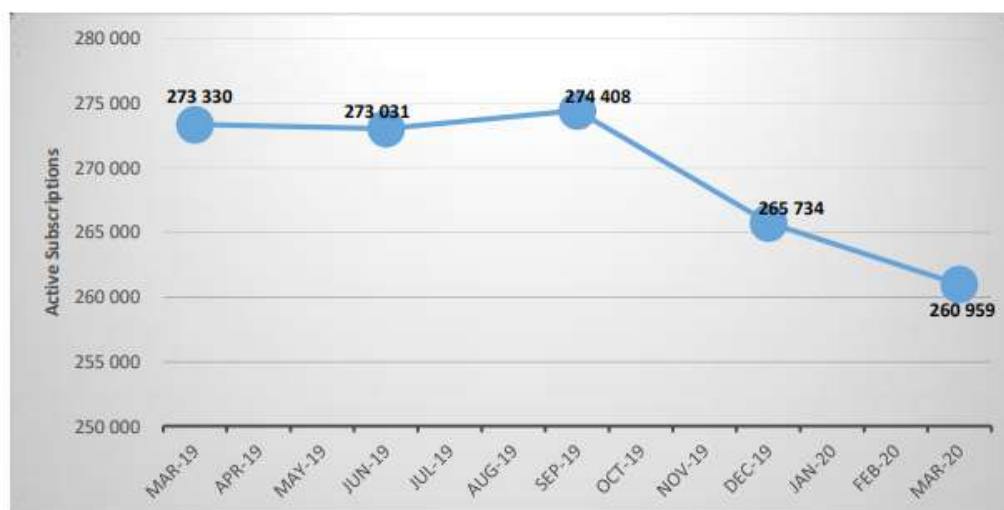
- 221. Given the disruptive nature of the digital economy, most Governments are defining and promoting ethical principles for responsible ICT development and use of digital technologies.
- 222. The 2017 International Telecommunications Union (ITU) ICT Development Index (IDI) Report, ranked the country 136 out of 176, mainly as a result of limited access to ICT services and high bandwidth costs.
- 223. The NDS for 2021-2025 seeks to facilitate the attainment of a digitally enabled economy, where all sectors embrace ICTs to improve efficiency and effectiveness, in line with the global trends. Focus will be on further deployment of broadband infrastructure, investments in last mile connectivity, smart Government systems and establishment of ICT access centres for marginalised groups.
- 224. Government will fully exploit the opportunities presented by ICTs, ensuring a conducive business environment that enables new investments by the private sector in order to keep pace with the rapid evolving ICT landscape.

Sector Overview

- 225. According to the Postal and Telecommunications Regulatory Authority of Zimbabwe (POTRAZ), First Quarter 2020 Report the total number of base stations in the country as at 31 March 2020 stood at 8,896 up from 8,889 mainly as a result of deployment of 8 new additional base stations and decommissioning of one base station.

226. The total number of active mobile subscriptions increased by 4% to reach 13 724 522 from 13 195 902, with the mobile penetration rate increasing by 3.6% to reach 94.2% from 90.6%.
227. Whilst fixed voice traffic declined by 6.9% and mobile voice traffic by 4.7%, mobile internet and data traffic increased by 2.8% during the same period.
228. Active fixed telephone subscriptions have been declining during the period as shown below.

Active Fixed Telephone Subscriptions



Postal & Telecommunications Sector Performance Report, First Quarter 2020

2021 ICT Priority Interventions

229. In line with the objective of enhancing ICT usage in the country, Government is rolling out e-Government systems in the areas of health, education, agriculture and the judiciary, among others.

230. A total of ZWL\$8 billion will be invested in the sector during 2021, mainly targeting rollout of the optic fibre network, digital television services and access to online public services by citizens.

231. The Table below summarises the broad ICT interventions during 2021.

2021 ICT Interventions

PROJECT NAME	TOTAL APPROPRIATION	STATUTORY AND OTHER RESOURCES	TOTAL RESOURCES
	ZWL\$	ZWL\$	ZWL\$
Broadcasting Digitalisation Migration Project	684,700,000		684,700,000
ZIMRA Automation	600,000,000		600,000,000
E-Government Flagship Projects	111,000,000		111,000,000
Voice over internet (VOIP) - Cost	300,000,000		300,000,000
National Data Centre	600,000,000		600,000,000
Integrated Electronic Case Management System	116,000,000		116,000,000
Telone - Backbone Infrastructure - Loan		950,000,000	950,000,000
Towers/ Base Stations		500,000,000	500,000,000
Netone Network Expansion		2,414,000,000	2,414,000,000
Upgrading and mentainance of national systems			
PFMS	715,800,000		715,800,000
SSB	24,726,000		24,726,000
Pensions	21,065,000		21,065,000
Impilo Electronic Health Management System	375,000,000		375,000,000
Smart Policing	100,000,000		100,000,000
Community Information Centres (CICs)	82,000,000		82,000,000
Computerisation of Schools- ICT Lab Per School	410,000,000		410,000,000
Total	4,140,291,000	3,864,000,000	8,004,291,000

232. The NetOne National Expansion Project Phase II will kick off next year with loan funding from China Eximbank of US\$71 million, of which

ZWL\$1.9 billion will be disbursed during 2021 and mainly targeting the roll out of the 4G network around the country.

233. Through the Universal Services Fund, POTRAZ will disburse ZWL\$500 million for the construction of ten base stations, with the infrastructure being shared by all players in the industry.

E-Government Programme

234. The adoption of online platforms will improve public service delivery, resulting in time and cost saving to both the citizen and Government.
235. Online services launched to date include the Deeds Office, Companies and Intellectual Property Rights, where name search and backend processes have been automated whilst for the Liquor Licensing Board, applications are now being received and approved online. Import and export licensing processes are now also being done electronically.
236. During 2021, Government will roll out more national systems and digital platforms, including the Government Communications Suite which will enable online communication through the PFMS, VoIP and the Integrated Electronic Case Management System in the judiciary.
237. Given the need for increased ICTs usage and the adoption of the new way of doing business, Government will establish an ICT Security Operations Centre to ensure a secure environment in the ICT sector.

Zimbabwe Digital Migration Project

238. The Zimbabwe Digital Broadcasting Migration Project, which commenced in 2015 and covering the entire broadcasting, has not met most of the identified milestones due to foreign currency and other funding challenges.
239. Given the evolution of technologies and shifting trends in the broadcasting sector ecosystem during the past five years, the Broadcasting Authority of Zimbabwe is now revising the project scope to align it to current trends and alternatives that best address the initially envisaged requirements.
240. During 2021, an amount of ZWL\$684.7 million has been set aside to address already identified scope of works as follows:
- Digitilisation of five television transmission sites;
 - Digitalisation of two television studios;
 - Digitalisation of FM radio studios;
 - Legacy debt.

AGRICULTURE

241. The Agriculture and Food Systems Transformation Strategy and the Agriculture Recovery Plan provide a roadmap and strategic thrust for agriculture for the period to 2030, focusing on increasing agricultural output to US\$8.2 billion by 2025 and its contribution to GDP from the current 12% to 20%.

242. Climate change impacts are reducing crop and animal production, hence, the need to channel resources towards enablers of agricultural productivity and resilience.
243. The NDS1 prioritises targeted infrastructure interventions in agriculture, estimated at US\$1.3 billion, and focusing on provision of water and irrigation systems, crop and livestock production facilities, farm machinery and equipment.
244. Funding will be mobilised from the fiscus, private sector and development partners.

Irrigation Development

245. Recent droughts have reinforced the importance of maximising usage of existing water bodies, soil and climate conditions towards increased agriculture productivity and output.
246. Despite the huge potential of irrigation, our interventions to date have failed to leverage on this potential. Out of the 2 million hectares that can be developed from existing water bodies, only 242 000 hectares are developed and equipped with irrigation infrastructure, with 175 000 hectares currently being functional.
247. The Irrigation Rehabilitation and Development Plan, seeks to increase area under irrigation and crop production from the current 242 000 ha to 350,000 ha by 2025, to be achieved through the following strategies:

- Rehabilitation and revitalization of 450 irrigation schemes in communal areas, including overhaul of the business model for such schemes in order to ensure viability and sustainability;
- Rehabilitation of 45,000 hectares on A1 and A2 farms as well as capacitation through access to various financial and equipment facilities and markets;
- Development of 120,000 ha of new irrigation infrastructure in marginal areas including 30 000 ha through efficient use of existing water bodies and adoption of modern irrigation systems; and
- Improve the policy and regulatory environment in order to crowd in private sector participation in irrigation development and ensure farmers access finance, inputs and markets.

248. Overall support during 2021 for the National Accelerated Irrigation Rehabilitation and Development Programme amounts to ZWL\$3.9 billion, covering the following, among others:-

- Rehabilittion and development of 10 557 ha at 101 irrigation schemes;
- Maintenance of 14 000 ha of communal irrigation schemes;
- Produce 30 irrigation design reports;
- Capacitation of A2 farmers with irrigation equipment and funding for rehabilitation of infrastructure on acquired farms through market led facilities.

249. The Table below provides details of planned interventions during 2021.

2021 Targeted Irrigation Projects (ZWL\$)

PROJECT NAME	POTENTIAL HECTARAGE	TARGET HECTARAGE	FISCAL RESOURCES	LOAN	DEVELOPMENT PARTNERS	TOTAL RESOURCES
Development of irrigation infrastructure	43,520	6,757	1,775,046,000	680,000,000	-	2,455,046,000
Smallholder Irrigation Revitalisation Programme (IFAD)	6,100	3,800	30,000,000	170,000,000	1,015,155,000	1,215,155,000
Operation and maintenance of irrigation schemes	35,000	14,000	7,360,000			7,360,000
Irrigation Equipment Facility	2,900	320	34,000,000			34,000,000
Upgrading of Fels Demonstration Centre	36	36	9,000,000			9,000,000
Upgrading and rehabilitation of irrigation demonstration plots	10	10	15,000,000			15,000,000
Offgrid Small Holder Farmer led Irrigation Systems	100	30	7,360,000			7,360,000
VIA (Virtual Irrigation Academy)			7,360,000			7,360,000
Technical performance evaluation of irrigation schemes			3,874,000			3,874,000
Project Management & Capacity building			111,000,000			111,000,000
Total	87,666	24,953	2,000,000,000	850,000,000	1,015,155,000	3,865,155,000

Smallholder Irrigation Revitalization Programme

250. The Smallholder Irrigation Revitalization Programme that seeks to reduce vulnerability of smallholder farmers to shocks, co-funded by IFAD, OFID and Government will target completion of 22 irrigation schemes, covering 3 800ha. IFAD will disburse ZWL\$709 million for the project during 2021.

251. Consistent with the contract conditions, Government will set aside ZWL\$30 million for the anticipated local taxes and duties on imported materials under the Programme.



Banga Irrigation Scheme, Chivi South, Masvingo

252. Noting the viability challenges facing communal irrigation schemes, Government has developed governance frameworks that will be rolled out to all schemes during 2021.
253. Central to the new initiative is the need to capacitate farmers to manage the schemes on a commercial basis, in order to reduce recourse to the fiscus, increase farmer income as well as contribute to the Nation's food security objective.
254. In this regard, farmers at rehabilitated smallholder irrigation schemes will be required to grow specific crops with technical advice being imparted from type of crop, planting dates, to arranging marketing channels.

255. Where applicable, ARDA will be designated to provide technical assistance to farmers surrounding its core estates and will assist farmers with advice from production, harvesting and marketing.

HUMAN CAPITAL DEVELOPMENT AND WELL BEING

256. Achieving the Vision of an Upper Middle Income Status by 2030 requires an empowered workforce, with the necessary skills and knowledge that can adapt to a fast changing world environment.

257. Education 5.0 Framework emphasises lifelong learning, continuous professional development and knowledge production, alongside innovation, in order to build individual capacities, as well as achieve gender equality.

258. Noting that good health is central to human happiness, well being and productivity, the NDS1 prioritises rehabilitation and upgrading of health infrastructure, supportive of a comprehensive referral system.

Education

259. During the NDS1 period, emphasis will be on delivering appropriate schools infrastructure that improves on access, brings inclusivity and reduces the incidences of hot sitting, particularly at primary and secondary schools level.

260. The emphasis on STEM/STEAM subjects also requires availability of laboratories, computers and other equipment at schools, as well as at teacher training colleges.
261. The new approach to learning, development of innovation hubs and Industrial Parks at tertiary level should provide the basis for a stronger partnership between education, industry and the overall economy.



Midlands state University Innovation hub

262. Government will prioritise infrastructure investments in the sector, focusing on teaching space, affordable accommodation for students, provision of learning and teaching equipment as well as introduction of ICT in education.
263. In line with the overall objective of enhancing the contribution of the education sector to the overall economy, the 2021 Budget has a provision of ZWL\$9.9 billion for infrastructure development, covering basic and tertiary education subsectors.

264. The allocation includes ZWL\$350 million for water supply interventions that will facilitate the safe return to formal learning for students following the outbreak of the COVID 19 pandemic.

265. Details on the investments are as indicated in The table below

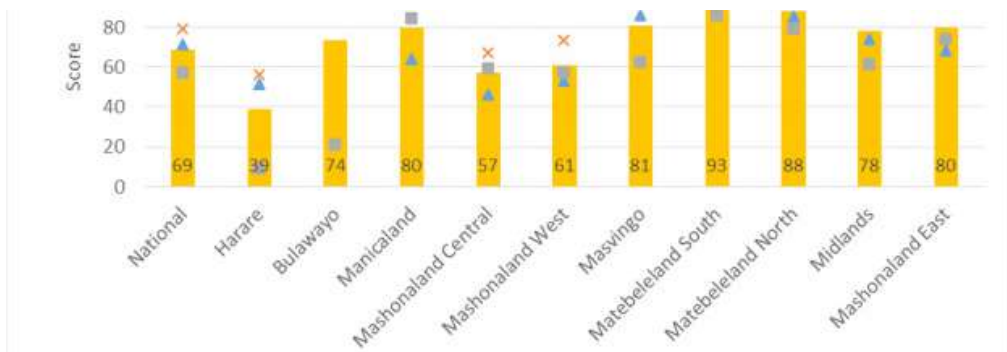
2021 Infrastructure Investments in the Education Sector (ZWL\$)

INTERVENTION	2021 ALLOCATION ZWL\$
INFANT EDUCATION	
Construction of ECD Learning Centres at 17 schools countrywide	194,200,000
Rehabilitation of schools	190,800,000
Borehole drilling and water reticulation	350,000,000
Sub Total	735,000,000
PRIMARY EDUCATION	
Construction of 4 new schools	270,000,000
Construction of classroom blocks at 21 Schools countrywide	238,000,000
Rehabilitation of storm damaged schools	508,000,000
Sub Total	1,016,000,000
SECONDARY EDUCATION	
Construction of classroom blocks at 21 schools countrywide	425,400,000
Rehabilitation of schools	517,600,000
Provision of mobile science laboratories countrywide	300,000,000
Sub Total	1,243,000,000
Grand Total Primary and Secondary Education	2,994,000,000
UNIVERSITIES	
Construction of additional facilities at State Universities	2,909,000,000
Pan African Mining University of Science and Technology-Teaching Centre	120,000,000
Sub Total	3,029,000,000
TEACHERS AND POLYTECHNIC COLLEGES	
Construction of additional facilities	810,000,000
School of Hospitality -Designs	34,000,000
Chivi College -Designs	12,000,000
Sub Total	856,000,000
INNOVATION DEVELOPMENT	
High Performance Centre expansion	80,000,000
Innovation Hubs at Bindura and HIT Universities	150,000,000
Industrial parks at four state universities (CUT, UZ, Marondera & MSU)	200,000,000
Sub Total	430,000,000
Total For Tertiary	4,315,000,000
Grand Total	7,309,000,000

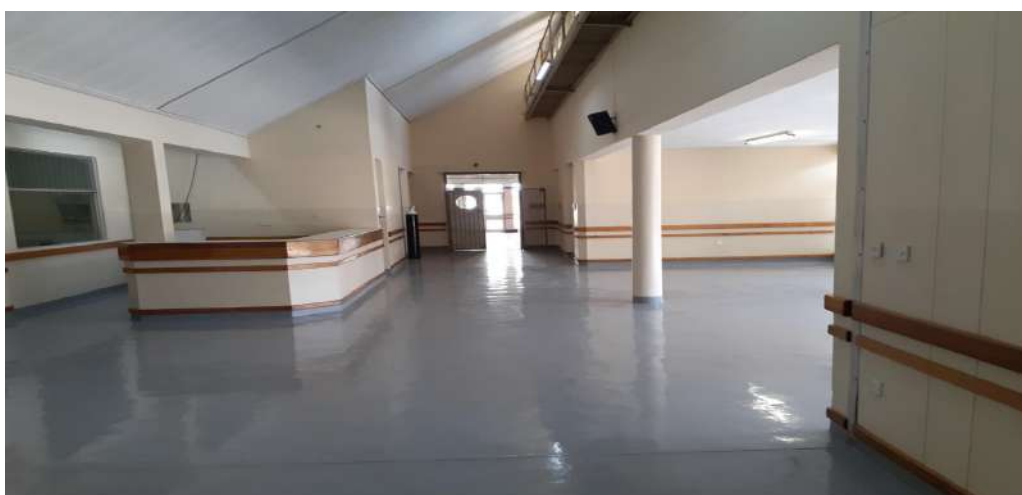
Health

266. The COVID-19 pandemic has put a spotlight on the challenges we knew existed in the healthcare system and infrastructure, from shortages of testing and medical supplies to access of health services for underserved communities.
267. The Resource Mapping Report, 2019, shows a gradual increase in total funding to health from US\$770 million in 2017 to US\$1.1 billion in 2019, mainly driven by increases in domestic funding.
268. Infrastructure gaps still exist in service delivery and availability as well as readiness of health facilities to provide basic health-care interventions, particularly in emergency situations.
269. The last health infrastructure assessment was conducted through the 2014 Service Availability and Readiness Assessment (SARA) for Zimbabwe. The overall health infrastructure score was 69%, and highest at 93% in Matebeleland South and lowest in Harare at 39%.

Health Services Infrastructure Index Score and Component Scores, Nationally and by Province, Zimbabwe 2014



270. The health crisis provides useful lessons for longer-term changes required to build greater resilience in our health systems against any future occurrence.



Refurbished Victoria Chitepo Provincial Hospital

271. In this regard, the NDS1 provides a commitment to revamp public health infrastructure, covering upgrading and construction of health facilities, installation of medical equipment, procurement of ambulances and utility vehicles.
272. Interventions to the sector during 2021 amount to ZWL\$8.6 billion as indicated in the Table below.

2021 Health Sector Interventions

PROJECT NAME	PROJECT SCOPE	2021 BUDGET ALLOCATIONS
		ZWL\$
Impilo National Electronic Health Information System	Procurement of high-grade servers, network access points, laptops and solar systems	375,000,000
Ambulances and utility vehicles	Procurement of 110 ambulances and utility vehicles	590,000,000
Sub Total		965,000,000
Central Hospitals	Procurement of medical equipment for Chitungwiza, Sally Mugabe, Mpilo, Ingutsheni and United Bulawayo Hospitals.	515,000,000
	Construction and refurbishment of facilities at Chitungwiza, Sally Mugabe, Mpilo, Ingutsheni and United Bulawayo Hospitals	1,317,147,000
	Refurbishment and upgrading of infrastructure at Parirenyatwa Group of Hospitals	813,010,000
Sub Total		2,645,157,000
Provincial Hospitals		
Refurbishment of provincial hospitals	General refurbishment of infrastructure and installation of fixed equipment at provincial hospitals	945,500,000
Lupane Provincial Hospital	Construction of outpatient department, pharmacy, wards, administration offices and staff accommodation	500,000,000
Sub Total		1,445,500,000
District Hospitals	Procurement of medical equipment for district hospitals.	250,000,000
	Upgrading of Buhera and Siakobvu to district hospitals, construction of new district hospitals at Nyamandlovu and Bulila and rehabilitation of facilities for district hospitals	2,234,500,000
Mission hospitals	Refurbishment and equipping of 8 mission hospitals	280,000,000
Sub Total		2,764,500,000
Rural Health Centres	Procurement of medical equipment and furniture for rural health centres.	82,543,000
	Construction, upgrading and rehabilitation of Rural Health Centres	423,000,000
Health posts	Construction of 100 health posts	50,000,000
Sub Total		555,543,000
Other facilities	Procurement and installation of medical oxygen generator for the Southern region	25,000,000
	Civil works for the new warehouse and rehabilitation of offices at National Pharmaceutical Company warehouse	70,000,000
	Equipping of the laboratories and renovation of buildings at National Institute of Health Research	100,000,000
	Equipping of the laboratory and renovation of building at Government Analyst Laboratory s	60,000,000
Sub Total		640,000,000
Grand Total		8,630,700,000

Impilo

273. Government, with support from development partners, has introduced a comprehensive, integrated national electronic health record solution (Impilo), meant to replace the paper based tools in health service provision with an electronic system that allows for patient registration, patient management and evaluation, patient tracking, stock usage tracking and data aggregation, validation and analysis.
274. Infrastructure required to support Impilo has been deployed at 200 health facilities in 8 rural districts and 3 cities including Harare.



On the job Impilo EHR training at Kunaka Rural Hospital in Seke District

275. In support of this initiative, an amount of ZWL\$ million has been set aside for the project, that will facilitate the roll out of the programme to 1 255 health facilities across the different levels of specialities.

Social Services

276. The plight of the most vulnerable in society has been worsened by the pandemic, as they are less capable of supporting themselves in isolation. The sustainable livelihoods programme is one programme Government has initiated to build resilience and capacitate them undertake productive activities.
277. The 2021 Budget allocation of ZWL\$180 million, targeting improvements in facilities for rehabilitation centres and children’s homes.

TRANSFERS TO PROVINCIAL COUNCILS & LOCAL AUTHORITIES

278. Government launched the Policy on Devolution and Decentralisation, giving impetus to the promotion of inclusive and balanced socio-economic development in the country, as enshrined in the Constitution and Vision 2030.
279. The Policy provides guidelines on the following:—
- Powers of lower tiers of Government including powers of communities in making decisions affecting them;
 - Promotion of democratic, accountable and effective Government in the country;
 - Preserve and foster peace, national unity and indivisibility of the State;
 - Promote the right of communities to manage their own affairs and development;

- Ensure equitable sharing of local and national resources;
 - Transfer local fiscal responsibilities and resources from central Government to sub-national entities.
280. Besides transfer of political power from Central to sub-National tiers of Government, the policy also envisions transfer of fiscal powers which enables Provincial/Metropolitan Councils and Local Authorities to spearhead economic and social development in their respective jurisdictions, using local revenues that will be complemented by mandatory transfers of national fiscal resources to devolved entities.
281. Consistent with the above, each Province and Council should become a dynamic economic hub, able to attract investments in their own right, taking advantage of their respective rich natural endowments.
282. The investments by Provincial/Metropolitan Councils and Local Authorities should target key local enablers such as roads, dams and other basic infrastructure projects that will crowd in private sector investments for local economies.
283. Noting that devolution of power comes with responsibilities, Government will undertake capacity building measures that ensure Provincial/Metropolitan Councils and Local Authorities uphold democratic, corporate governance as well as fiscal accountability standards, expected of all public entities utilising public funds.

284. Consistent with the Constitutional provisions, the 2021 Budget has an allocation of ZWL\$19.5 billion that has been distributed to provincial/ metropolitan councils and local authorities in line with the agreed formula.
285. Annexure II provides details on the distribution of the amount, with councils now identifying community level projects that will be funded from this allocation.

PROCUREMENT

286. The Constitution prescribes public entities to procure goods and services in a manner that is transparent, fair, honest, cost-effective and competitive.
287. The attainment of targets under the National Development Strategy and Vision 2030 also requires that resources be effectively deployed and efficiently managed.
288. Distortions in the domestic market, where supplies of some critical raw materials and equipment, including those imported, is through informal channels have given rise to tenderpreneurships and pricing of products and services outside markets fundamentals.
289. The above challenges require urgent redress to ensure that we nurture and sustain the stability now prevailing in the market, as well as provide public services at competitive costs.

290. Regarding costings of major projects and programmes, all existing contracts must be reviewed and validated to ensure costs reflect the current economic conditions, including benchmarking costs to those prevailing in the region and internationally.
291. Government will engage reputable international procurement consultants to validate and undertake spot checks on specific project/programme costings, and where necessary, corrective action will be taken.
292. To ensure that all public procurement is competitive and offers value for money, provisions of Section 4 of the PPDP Act shall apply including the following:
- Wherever possible, options that allow Government to achieve economies of scale in public procurement should be pursued.
 - Review and validate existing contracts to ensure costs reflect the current economic conditions, including benchmarking such costs regionally and internationally.
 - Mechanisms for ensuring pricing by lowest compliant bidders to specifications is within the market and internationally benchmarked.
 - Review of contract price variations and provisions to limit approvals to cases where input costs are consistent with market and internationally benchmarked prices.
 - Restricting SPOC approvals for all single sourcing and direct procurement to cases where the relevant accounting officer has submitted a due diligence report that demonstrates the competitiveness of the cost.
 - Prioritising implementation of the e-Government procurement system.

293. The above measures will be complemented by capacity development and licensing requirements for public procurement practitioners that meet applicable certification standards, with continuous professional development to enhance public procurement skills enforced through PPDPA Professionalisation Regulations.
294. PRAZ shall monitor and evaluate compliance including making recommendations on any improvements required to the public procurement systems, and consistent with international best practice

MONITORING AND REPORTING ON PROGRESS

295. The monitoring and assessment of overall performance of Government programmes and projects, including tracking of achievement towards desired results will be undertaken through the Office of the President and Cabinet, working in conjunction with the Public Service Commission and Treasury.
296. Monitoring and Evaluation (M&E) practices adopted by Government and contained in the Monitoring and Evaluation Policy (2020) will be operationalised through the Results Based Monitoring and Evaluation framework, which is one of the five pillars of the Integrated Results Based Management.
297. The overall objective is to improve performance of Government and quality of life of citizens through implementation and achievement of

NDS1 national and sectoral priorities as well as national development results frameworks.

298. On the other hand, PBB provides direct linkage between budgetary allocations and expected outputs and outcomes. This ensures that budgetary allocations are linked to expected NDS1 deliverables, with the performance information being incorporated into the Budget.
299. Thus, line Ministries as part of the requirements of the Monitoring and Evaluation Policy (2020), submitted a monitoring plan for the year 2020, which they will use to track the implementation and performance of programmes and projects.
300. Furthermore, each Implementing Agency, in consultation with relevant stakeholders, will be required to develop a Project Performance Framework with clearly defined performance results and associated indicators for tracking progress under the various programmes and sub-programmes.
301. Consequently, as part of this process, the M&E system will be premised on the Results framework enshrined in the Estimates Book, which has emphasis on the final outputs and outcomes that are client oriented.
302. To ensure delivery of the envisaged outputs, MDAs will complete and submit Strategic Plans, Ministerial/Programme and Sub-Programme Performance Management documents. They will also submit priority 100-day cycle projects and programmes.

303. All this information will be captured in the Whole of Government Performance Management System (WOGPMS) which is web-based. This will be completed by the Executive Electronic Dashboard, including quarterly budget performance reports being submitted to Treasury.

304. The specific role of each of these agency is as summarised below.

Office of the president and Cabinet

305. The Office is the overall coordinating and monitoring arm of Government, and issues timelines on planning, implementation, monitoring and reporting of projects and programmes. Accordingly, the Office will supervise the inputting of performance data into the Whole of Government Performance Management System (WOGPMS) and Executive Electronic dashboard (EED) including undertaking sample monitoring and validation visits.

306. Through the Office of the Minister of State for Provincial Affairs, the Office of the President and Cabinet is able to monitor projects across provinces, using its local network.

Public Service Commission

307. The Commission has inspectors in Provinces and Districts who will monitor projects at that level and conduct validation visits and stakeholder engagements over progress reports, with appropriate recommendations being submitted to Head Office and the Office of the president and Cabinet.

Treasury

308. Treasury has a dedicated Implementation Monitoring Department that monitors, tracks expenditure and evaluates all budgeted projects and programmes being undertaken by MDAs with a view to assessing efficiency and effectiveness in resource allocation and utilisation.
309. Thus, Department will provide periodic reports and recommendations regarding public resource utilisation.

Annexure I: 2021 Infrastructure Investment Programme Projects

PROVINCE	PROJECT NAME	2021 PLANNED WORKS	2021 CONSOLIDATED REVENUE FUND
			ZWL\$
Office of the President and Cabinet			
Bulawayo	Bulawayo State House	Refurbishment of main hall, 2 water reservoirs, and repainting	55,000,000
Harare	Mandara State Residences	Renovations to the entire house and cottages.	65,000,000
Harare	Zimbabwe House	Refurbishment and upgrading of Zimbabwe house	75,000,000
Harare	State House	Construction of a storage building, guard house for main gate and garages	70,000,000
Harare	Harare Guest Lodge	Repainting of the guest house and other repairs.	25,000,000
Harare	CSU and Presidential Guard State house	Renovations to the structure	30,000,000
Harare	Glenlorne State residences	Rehabilitation of State residence	20,000,000
Harare	Munhumutapa Building	Rehabilitation of Munhumutapa Building	200,000,000
Harare	Harare District Office	Construction of superstructure for Harare District office	152,000,000
Harare	Research Council	Construction of a two storey office building.	25,000,000
Harare	Radiation Protection Authority	Construction of Radiation Protection Waste Management Facility	60,000,000
Manicaland	Baringa Guest House	Rehabilitation of main house and cottages	100,000,000
Manicaland	Chimanimani District Office	Construction of superstructure for Chimanimani District office	2,000,000
Manicaland	Rusape District Office	Construction of superstructure for Rusape District office	35,000,000
Manicaland	Gowakowa-Vilage 50 West	Regravelling 10km	28,125,000
Manicaland	Chidzire	Bridge construction	12,000,000
Manicaland	Samhutsa-Ngaone	Regravelling 7km	20,000,000
Manicaland	Musirizwi	Bridge construction	12,000,000
Mashonaland Central	Training School	Construction of training school	400,000,000
Mashonaland Central	Karoi	Bridge construction	8,000,000
Mashonaland Central	Nzoumvunda	Bridge construction	10,000,000
Mashonaland Central	Nyakasikana-Karanda	Road construction 17km	170,000,000
Mashonaland Central	Kanyemba Roads road regravelling	Regravelling 10km	28,125,000
Mashonaland Central	Kanyemba Airstrip	Construction and rehabilitation	100,000,000
Mashonaland East	Chitungwiza - Ushewokunze	Regravelling 10km	28,125,000
Mashonaland East	Nyakasoro	Bridge construction	7,000,000
Mashonaland East	Mahume	Bridge construction	12,000,000
Mashonaland West	Chinhoyi Guest House	Furnishing of the main house, swimming pool rehabilitation and durawall.	40,000,000

PROVINCE	PROJECT NAME	2021 PLANNED WORKS	2021 CONSOLIDATED REVENUE FUND
			ZWLS
Mashonaland West	Kariba district office	Construction of superstructure for Kariba District office	4,000,000
Mashonaland West	Sanyati-Chiridzangoma	Regravelling 10km	28,125,000
Mashonaland West	Musukwe	Bridge construction	10,000,000
Mashonaland West	Piriwiri	Bridge construction	20,000,000
Mashonaland West	Manapools	Road rehabilitation 10km	12,500,000
Masvingo	Gutu Special Service District Offices	Completion of Gutu district office main structure	1,000,000
Masvingo	Makambe - Matihwa	Regravelling 10km	28,125,000
Masvingo	Mupembedzi	Bridge construction	10,000,000
Masvingo	Gonarezhou	Road rehabilitation 10km	12,500,000
Masvingo	Chivi	Construction of Airstrip	12,000,000
Masvingo	Tugwi Murkosi	Construction of Airstrip	8,000,000
Masvingo	Buffalo range	Construction of Airstrip	60,000,000
Matabeleland North	Victoria Falls Special Service District Offices	Construction of superstructure for Victoria Falls District office	56,000,000
Matabeleland North	Pandamatenga offices	Construction of superstructure for Kariba District office	20,000,000
Matabeleland North	Siwila-Sihazela	Regravelling 10km	28,125,000
Matabeleland North	Somgolo	Bridge construction	20,000,000
Matabeleland North	Hwange	Road rehabilitation 10km	12,500,000
Matabeleland North	Binga Airstrip	Construction and Rehabilitation of Airstrip	100,000,000
Matabeleland South	Filabusi - Mbondo -Avoca	Regravelling 10km	28,125,000
Matabeleland South	Mtshingwe	Bridge construction	10,000,000
Matabeleland South	Simukwe	Bridge construction	12,000,000
Matabeleland South	Matopos	Road rehabilitation 10km	12,500,000
Midlands	Gweru Guest House	Rehabilitation of main house reservoir, ceiling repairs, replacement of main gate as well as the lighting system	120,000,000
Midlands	Utsanana - Ingezi	Regravelling 10km	28,125,000
Midlands	Gunguhwe	Bridge construction	7,000,000
Midlands	Mkoba - Dimbamiwa	Regravelling 10km	33,000,000
National	Borehole drilling	Procurement of drilling equipment and drilling of boreholes	719,403,000
National	Irrigation DDF	Rehabilitation of small holder irrigation schemes, weirs and dams	108,597,000
Public Service, Labour and Social Welfare			
Bulawayo	John Smale Children's Home	Refurbishment and construction of perimeter wall	5,000,000

PROVINCE	PROJECT NAME	2021 PLANNED WORKS	2021 CONSOLIDATED REVENUE FUND
			ZWLS
Bulawayo	ZITF stand	Extension and rehabilitation of the Zimbabwe International Trade Fair stand	14,500,000
Harare	African Regional Labour Administration Centre (ARLAC)	Construction of the African Regional Labour Administration Centre	77,400,000
Harare	Makombe Provincial Labour Offices	Refurbishment of buildings and offices	45,000,000
Harare	Hupenyu Hutsva Children's Home	Refurbishment of buildings	5,000,000
Manicaland	Lowden Lodge	Refurbishment of centre and staff houses	20,000,000
Manicaland	Mutare Probation & Remand Home	Construction of ablution facilities and equipping of the home	5,000,000
Manicaland	Tongogara Refugee Camp	Water reticulation systems and electrification of the Camp	3,000,000
Mashonaland East	Ruwa National Rehabilitation Centre	Retooling of centre	7,639,000
Mashonaland East	Beatrice National Rehabilitation Centre	Refurbishment of centre and staff houses	5,000,000
Mashonaland West	Mbire Office Block	Refurbishment of the building	5,000,000
Mashonaland West	Kadoma Training Institute	Refurbishment of the centre and staff houses fencing	5,000,000
Masvingo	Northcot Children's Home	Construction of durawall, admin offices and superintendant house	17,000,000
Masvingo	Chambuta Children's Home	Refurbishment of buildings and perimeter wall	5,000,000
Matabeleland South	Migration Centre	Construction of the Migration Centre	20,000,000
Matabeleland South	Plumtree Reception Centre	Construction of offices	15,000,000
Matabeleland South	Beitbridge Reception Centre	Refurbishment of buildings and ablution facilities	10,000,000
Midlands	Blue Hills Probation Centre	Refurbishment of buildings, toilets and fencing of the centre	5,000,000
Office of the Auditor General			
Harare	Burroughs Building	Rehabilitation of elevator system and the building	75,950,000
Primary and Secondary Education			
Bulawayo	Cowdray Park 1 Primary School	Completion of 4 classrooms with furniture	15,000,000
Bulawayo	Chitubu Primary School	Construction of 2x2 ECD blocks	15,000,000
Bulawayo	Cowdray Park 2 Primary	Construction of 2x2 classroom blocks	18,000,000
Bulawayo	Cowdray Park 1 Secondary School	Construction of 2x2 classroom blocks	16,000,000
Bulawayo	Mncumbata Secondary School	Construction of 2x2 classroom blocks	15,000,000
Bulawayo	Pumula South Secondary School	Construction of 2x2 classroom blocks	15,000,000
Harare	Rehabilitation of teachers hostels and studios	Rehabilitation of teachers hostels and studios	551,000,000
Harare	St Marys Primary School	Completion of 4 classrooms with furniture	18,000,000
Harare	Lonely Mine Primary School	Construction of 2x2 ECD blocks	22,000,000
Harare	Nyaradza Primary School	Construction of 2x2 ECD blocks	20,000,000
Harare	Budiriro 6 Primary	Construction of 2x2 classroom blocks	20,000,000
Harare	Caledonia Secondary School	Construction of 2x2 classroom blocks	20,000,000
Manicaland	Demene primary	Construction of 2x2 classroom blocks	20,000,000

PROVINCE	PROJECT NAME	2021 PLANNED WORKS	2021 CONSOLIDATED REVENUE FUND
			ZWLS
Manicaland	Nyangani 2 Secondary School	Construction of 2x2 classroom blocks	20,000,000
Manicaland	Ruvimbo Secondary	Construction of 2x2 classroom block	25,000,000
Manicaland	Magamba Primary	Construction of 2x2 classroom blocks	25,000,000
Mashonaland Central	Mariga Primary	Construction of 2x2 classroom blocks	15,000,000
Mashonaland Central	Gonde Primary School	Construction of 2x2 classroom blocks	8,000,000
Mashonaland Central	Komanani Primary School	Construction of Administration block ,4 x 2 classroom block and drilling of borehole	70,000,000
Mashonaland Central	Chapoto Secondary School	Construction of 2x2 classroom blocks	30,000,000
Mashonaland Central	Mariga Secondary	Provision of water reticulation system	15,000,000
Mashonaland Central	Machembere Secondary	Construction of Administration block ,4 x 2 classroom block and drilling of borehole	60,000,000
Mashonaland Central	Chiwaridzo Secondary School	Construction of 2x2 classroom block	18,000,000
Mashonaland East	Mathambo Primary	Construction of 2x2 classroom blocks	25,000,000
Mashonaland East	Wedza Primary	Construction of 2x2 classroom blocks	20,000,000
Mashonaland East	Machechera Secondary School	Construction of 2x2 classroom blocks	10,000,000
Mashonaland West	Kauzhumba Primary	Construction of 2x2 classroom blocks	20,000,000
Mashonaland West	Mayovhe Secondary School	Construction of 2x2 classroom blocks	25,000,000
Mashonaland West	Bosbery Secondary School	Construction of 2x2 classroom blocks	15,000,000
Masvingo	Chingwizi Primary School	Construction of 2x2 ECD blocks	10,000,000
Masvingo	Melbourne Primary School	Construction of a model ECD block	20,000,000
Masvingo	Melbourne Primary	Construction of 2x2 classroom blocks	20,000,000
Masvingo	Tugwi Murkosi Primary School	Construction of Administration block ,4 x 2 classroom block and drilling of borehole	70,000,000
Masvingo	Chingwizi Primary School	Construction of Administration block ,4 x 2 classroom block and drilling of borehole	60,000,000
Masvingo	Komanani Primary School	Construction of Administration block ,4 x 2 classroom block and drilling of borehole	70,000,000
Masvingo	Mathambo Secondary School	Construction of 2x2 classroom block	25,000,000
Masvingo	Muleme Secondary	Construction of 2x2 classroom block	10,000,000
Matabeleland North	Tshino Secondary School	Construction of 2x2 classroom blocks	25,000,000
Matabeleland North	Whitewater Secondary School	Construction of 2x2 classroom block	10,000,000
Matabeleland South	Ntabende Primary	Construction of 2x2 ECD blocks	25,000,000
Matabeleland South	Mpalawami Primary	Construction of 2x2 ECD blocks	15,000,000
Matabeleland South	St Anna Secondary School	Construction of 2x2 classroom block	20,000,000
Matabeleland South	Spitzkop North Secondary School	Construction of 2x2 classroom block	27,000,000

PROVINCE	PROJECT NAME	2021 PLANNED WORKS	2021 CONSOLIDATED REVENUE FUND
			ZWLS
Midlands	Mathonisa Primary	Construction of 2x2 ECD blocks	20,000,000
Midlands	Woodlands Primary	Construction of 2x2 classroom blocks	20,000,000
Midlands	Takunda Primary	Construction of 2x2 classroom blocks	15,000,000
Midlands	Ngwenyama Primary	Construction of 2x2 classroom blocks	12,000,000
Midlands	Mbizo 3 Secondary School	Construction of 2x2 classroom blocks	15,000,000
Midlands	Mapfungautsi Secondary School	Construction of 2x2 classroom block	10,000,000
National	Rehabilitation of Ambassador House and provincial offices	Rehabilitation of Ambassador House and provincial offices	330,800,000
National	Rehabilitation of storm damaged schools	Rehabilitation and upgrading of education facilities	130,800,000
National	Rehabilitation of schools	Rehabilitation and upgrading of education facilities	60,000,000
National	Borehole drilling and water reticulation	Drilling of boreholes and installation of tanks	350,000,000
National	Rehabilitation of other Government schools	Rehabilitation and upgrading of education facilities	130,800,000
National	Rehabilitation of storm damaged schools	Re-roofing, painting, flooring windows, and doors	341,000,000
National	Rehabilitation of other Government schools	Re-roofing, painting, flooring windows, and doors	167,000,000
National	Rehabilitation of storm damaged schools	Rehabilitation and upgrading of education facilities	417,600,000
National	Rehabilitation of other Government schools	Rehabilitation and upgrading of education facilities	100,000,000
National	Mobile Science labs	Provision of mobile science laboratories to secondary schools	300,000,000
Local Government and Public Works			
Bulawayo	Bulawayo City Council	Construction of Luveve outfall, replacing and upgrading collapsed concrete pipe and ancillary works.	60,000,000
Harare	Harare City Council	Completion of 1000mm by 1.2 km Ruzivo Stream Crossing in Mufakose	530,000,000
Manicaland	Chimanimani houses	Construction of houses for cyclone Idai victims	100,000,000
Manicaland	Rusape Municipality	Motorised Grader and pneumatic roller	60,000,000
Mashonaland East	Mutoko Composite Office	Completion of Mutoko District composite office building	77,945,000
Mashonaland East	Hwedza Composite Office	Completion of Hwedza District composite office building	100,000,000
Mashonaland West	New Parliament Building	Construction of a ring road, water reservoir, installation of ICT infrastructure and provision of dedicated electricity power line	50,000,000
Matabeleland North	Lupane Composite Office Phase 2	Construction of a Composite Office block	212,055,000
Matabeleland North	Tsholotsho houses	Construction of houses for flood victims	50,000,000
Midlands	Gweru City Council	Rehabilitation of White Waters sand filters and upgrading of the water reticulation network.	50,000,000
National	Refurbishment of office building	Rehabilitation and upgrading of Government buildings	300,000,000
National	Lifts repairs and servicing	Replacement and rehabilitation of lifts	434,110,000

PROVINCE	PROJECT NAME	2021 PLANNED WORKS	2021 CONSOLIDATED REVENUE FUND
			ZWLS
National	Development of Spatial Plans	Development of regional spatial plans for Tugwi Murkosi, New City, Harare and Victoria Falls -Zambezi	202,000,000
National Housing and Social Amenities			
Mashonaland West	Crownlands	Completion of roads and storm water drains and water and sewer reticulation	284,000,000
Mashonaland West	Kasese Housing - Kariba	Servicing of 1449 mixed density stands, provision of off-site infrastructure (sewer ponds, 5ML water reservoir & upgrading of existing water treatment plant	101,000,000
Masvingo	Chingwizi Houses	Construction of 100 housing units	21,500,000
Matabeleland North	Hwange-Empumalanga	Completion of servicing of the 2300 stands	297,500,000
Matabeleland North	Binga Houses	Construction of 37 houses of the flood victims	8,500,000
Matabeleland South	Beitbridge Civil Servants' Housing	Completion of 6 x garden flats, 6 x duplex flats, 2x 2 bedroomed flats and 4x 3 bedroomed flats	595,000,000
National	Sanitisation of informal settlements	Feasibility studies for all informal settlements and preliminary works	42,500,000
Justice, Legal and Parliamentary Affairs			
Bulawayo	Ntabazinduna Armoury	Construction of a new armoury	6,500,000
Bulawayo	Ntabazinduna Dinning Hall	Construction of a Dining Hall	6,500,000
Bulawayo	Ntabazinduna Parade Square	Resurfacing of the parade square	7,500,000
Bulawayo	Khami Houses	Construction of 3 houses	2,000,000
Harare	Staff College Harare	Construction of Staff College	17,500,000
Harare	Chikurubi Houses	Construction of 9 houses	800,000
Harare	Agricultural Show Stand	Construction of a new exhibition hall	30,000,000
Manicaland	Rusape Houses	Construction of 6 houses	1,000,000
Manicaland	Chipinge Houses	Construction of a barrack	1,800,000
Manicaland	Little Kraal Houses	Construction of 5 houses	1,000,000
Manicaland	Mutare Houses	Construction of 3 houses	1,000,000
Manicaland	Mutare farm	Construction of 6 houses	3,000,000
Mashonaland Central	Guruve Houses	Construction of a septic tank and sewer line.	750,000
Mashonaland Central	Mazowe Houses	Construction of 2 houses	1,000,000
Mashonaland East	Mutoko Houses	Construction of 4 houses & a barrack	750,000
Mashonaland East	Marondera Houses	Construction of 6 houses & a barrack	750,000
Mashonaland East	Ridigita Houses	Construction of 5 houses	750,000
Mashonaland East	Marondera Female Open Prison	Construction of 2 living blocks admin block and kitchen.	10,000,000
Mashonaland West	Hurungwe Houses	Construction of 6 houses	1,250,000
Mashonaland West	Chinhoyi Houses	Construction of 4 houses	1,000,000

PROVINCE	PROJECT NAME	2021 PLANNED WORKS	2021 CONSOLIDATED REVENUE FUND
			ZWLS
Mashonaland West	Karoi Houses	Construction of 3 houses & a barrack	850,000
Mashonaland West	Kadoma Houses	Construction of a barrack	750,000
Masvingo	Chiredzi Houses	Construction of 6 houses & a barrack	7,000,000
Masvingo	Masvingo houses	Construction of 4 houses	1,000,000
Masvingo	Mutimurefu Houses	Construction of 4 houses	1,500,000
Matabeleland North	Anju Farm Houses	Construction of 2 houses, low voltage power line and septic tank	5,000,000
Matabeleland South	Beitbridge Houses	Construction of 5 houses	2,500,000
Matabeleland South	Plumtree Houses	Construction of 5 houses and purchase of a transformer	3,500,000
Matabeleland South	Gwanda houses	Construction of 4 houses	1,000,000
Midlands	Kwekwe Houses	Construction of 5 houses	1,000,000
Midlands	Gokwe Houses	Construction of 4 houses & a barrack	750,000
Midlands	Whawha Houses	Construction of 8 houses	1,300,000
National	Resuscitation of Irrigation	Resuscitation of irrigation equipment	10,000,000
National	Solar systems	Security lighting	65,000,000
National	Borehole drilling and rehabilitation	Drilling of 12 boreholes as well as equipping and 10,000litre storage tanks x 12	6,500,000
National	Rehabilitation of prisons	Rehabilitation of structures	357,500,000
National	Computerisation project	Installation of the SMART PRISON SYSTEM	65,000,000
National	Generators	Purchase of 8 x 150kva generators	15,000,000
Energy and Power Development			
Manicaland	Kriste Mambo High School	Construction of a 50m ³ biogas digester	1,500,000
Manicaland	Fombe Secondary School	Installation of a 15kw micro solar systems	8,630,000
Mashonaland Central	Mazowe High School	Construction of a 50m ³ biogas digester	1,500,000
Mashonaland Central	Mukoma Secondary School	Installation of a 15kw micro solar systems	8,630,000
Mashonaland East	Assis High School	Construction of a 50m ³ biogas digester	1,500,000
Mashonaland East	Chimusoro Clinic	Installation of a 10kw micro solar systems	5,850,000
Mashonaland West	Chikangwe High School	Construction of a 50m ³ biogas digester	1,500,000
Masvingo	Serima Mission	Construction of a 50m ³ biogas digester	1,500,000
Masvingo	Soti Source	Installation of an isolated 86.4kw micro grid solar system	62,200,000
Matabeleland North	Mabhikwa High School	Construction of a 50m ³ biogas digester	1,500,000
Matabeleland North	Hwange 7 & 8 Expansion	Hwange 7 & 8 power plant local costs	900,000,000
Matabeleland South	Mzingwane High School	Construction of a 50m ³ biogas digester	1,500,000
Midlands	Kana Mission School	Construction of a 50m ³ biogas digester	1,500,000
Midlands	Gandavaroyi	Installation of an isolated 84 kW micro grid solar system	40,300,000

PROVINCE	PROJECT NAME	2021 PLANNED WORKS	2021 CONSOLIDATED REVENUE FUND
			ZWLS
Information, Publicity and Broadcasting Services			
National	Zim Digital Broadcasting Migration Project	Civil works, installation of TV transmitters & Radio transmitters as well as refurbishment of ZBC studios	774,700,000
Zimbabwe Anti-Corruption Commission			
Harare	ZACC Head Office	Rehabilitation of Offices	112,000,000
Transport and Infrastructural Development			
Bulawayo	J.M. Nkomo International Airport	Construction of tower	200,000,000
Harare	Mbudzi overpass detours	Construction of detours	345,936,000
Harare	Lomagundi Road	10km widened	900,000,000
Manicaland	Murambinda-Birchenough	10km road constructed	400,000,000
Manicaland	Nyanga-Ruwange	10km road constructed	300,000,000
Manicaland	Kopa-Joppa	Construction of road	499,920,000
Manicaland	Odzi-Marange-Zviripiri	Reconstruction of damaged road section	499,920,000
Manicaland	Wengezi-Skyline	Reconstruction of damaged road section	499,920,000
Mashonaland Central	Guruve-Kanyemba	10km constructed	499,920,000
Mashonaland Central	Bindura-Matepatepa	10km road constructed	300,000,000
Mashonaland East	Murehwa-Madacheche	5km road constructed	400,000,000
Mashonaland East	Mushandirapamwe-Hwedza	10km road constructed	300,000,000
Mashonaland West	Makuti-Hellsgate	Upgrading of 6.5km stretch between Marongora-Hellsgate	200,000,000
Mashonaland West	Alaska-Copper Queen	10km road constructed	300,000,000
Mashonaland West	Jeka Bridge	Bridge Designed	15,000,000
Mashonaland West	Tanganda Halt Bridge	Bridge Designed	20,000,000
Mashonaland West	Golden Valley-Sanyati	10km road constructed	300,000,000
Masvingo	Tugwi-Mukosi	3.6km constructed	356,400,000
Masvingo	Chivi-Mhandamabwe-Tugwi	14km rehabilitated	699,888,000
Masvingo	Rutenga - Zvishavane	10km road constructed	300,000,000
Masvingo	Chilonga Bridge	Bridge Designe	50,000,000
Masvingo	Serui Bridge	Bridge Designed	50,000,000
Masvingo	Musitwe Bridge	Bridge Designed	50,000,000
Matabeleland Central	Mt Darwin-Mukumbura	10km road constructed	300,000,000
Matabeleland North	Bulawayo-Tsholotsho	10km road constructed	300,000,000
Matabeleland North	Kwekwe-Nkayi-Lupane	10km road constructed	300,000,000
Matabeleland South	Bulawayo-beitbridge (Esigodini Road-Bulawayo)	10km widened	900,000,000

PROVINCE	PROJECT NAME	2021 PLANNED WORKS	2021 CONSOLIDATED REVENUE FUND
			ZWL\$
Matabeleland South	Bulawayo-Kezi	10 km widened	499,920,000
Matabeleland South	West Nicholson-Mberengwa	10km road constructed	300,000,000
Matabeleland South	Gwanda-Maphisa	10km road constructed	200,000,000
Matabeleland North	Bulawayo-Nkayi	10km constructed	499,920,000
Midlands	Zvishavane-Rutenga	10km constructed	492,000,000
Midlands	Mberengwa-West Nicholson	8km surfaced	300,000,000
Midlands	Mberengwa-Mataga	5.5km surfaced	150,000,000
Midlands	Kwekwe-Nkayi	10km road constructed	150,000,000
National	Harare-Masvingo-Beitbridge Road	200km rehabilitated	10,000,000,000
Women Affairs, Community, Small and Medium Enterprises Development			
Harare	Rehabilitation of Offices	Partitioning of offices	50,000,000
Mashonaland Central	One Stop Centre	Construction of office	15,000,000
Mashonaland East	Conference Centre	Construction of Conference Centre	150,000,000
Matabeleland North	Roger Howman	Re-roofing, paining tiling and electrical works	18,000,000
Matabeleland North	Matabeleland South Craft Centre	Construction of Community Centre	20,000,000
Matabeleland North	Maboleni	Construction of Community Centre	15,000,000
Midlands	Duma Community Centre	Construction of Community Centre	20,000,000
Midlands	Dambatsoko Community Centre	Construction of Community Centre	10,000,000
Midlands	Bindura SME Market	Construction of SME's market	150,000,000
Higher & Tertiary Education, Science and Technology Development			
Bulawayo	National University of Science and Technology	Completion of the library	250,000,000
Harare	Harare Institute of Technology	Rehabilitation of hostel	50,000,000
Harare	Harare Institute of Technology-Multi-purpose workshop construction	Construction of Multi-purpose workshop	140,000,000
Harare	Water supply system	Drilling of boreholes and water reticulation	40,000,000
Harare	Halls of residence	Construction of halls of residence	138,000,000
Harare	Zimbabwe Open University' National Centre-Administration,	Construction of Teaching & Learning Block	130,000,000
Harare	PAMUST	Construction of Teaching centre	120,000,000
Harare	Belvedere Teachers College	Floor tiling, Wall painting, plumbing and electrical, ceiling repairs and internet connections, revamp grounds and construction of perimeter wall	20,000,000
Harare	Msasa Industrial Training College	Replacement of all roof sheets and industrial gutters	20,000,000
Harare	Msasa Industrial Training College	Water reseivor and borehole drilling	10,000,000
Harare	Management Training Bureau	Rehabilitation of Management Training Bureau	20,000,000
Harare	Morganzintec	Borehole drilling	8,000,000

PROVINCE	PROJECT NAME	2021 PLANNED WORKS	2021 CONSOLIDATED REVENUE FUND
			ZWL\$
Harare	High Performance Computing	Equipping of the HPC	80,000,000
Harare	Zimbabwe Genomic Centre	Purchase of land	50,000,000
Harare	Centre for excellence dryland agriculture	Construction of superstructure	60,000,000
Harare	Zimbabwe Space Agency Projects	Construction of superstructure	90,000,000
Harare	Defence House	Upgrading, installation of new elevators	100,000,000
Harare	Academy for Sciences and Zimbabwe Space Agency Projects	Equipping	15,000,000
Manicaland	Manicaland University of Applied Sciences	Construction of a Lecture Block to ring beam level	140,000,000
Manicaland	Manicaland State University of Applied Sciences	Construction of a hostel to ring beam level	150,000,000
Manicaland	Marymount Teachers' College	Construction of female hostel to second floor deck	77,000,000
Manicaland	Mutare Polytechnic	Preparation of engineering drawing, Site clearance, soil testing and excavation for B Tech Block	50,000,000
Mashonaland Central	Bindura University	Completion of female halls of residence	256,000,000
Mashonaland Central	Madziwa Teachers' College	Construction of one student hostel to first floor deck	70,000,000
Mashonaland Central	Madziwa Teachers' College	Construction of Science laboratories to first floor deck	75,000,000
Mashonaland East	Marondera University of Agriculture Sciences and Technology	Construction of a block to first floor deck	200,000,000
Mashonaland East	Kushinga Phikelela Polytechnic	Completion of glazing and external sewer reticulation, and procurement of furniture and beds for student hostel	90,000,000
Mashonaland West	Chinhoyi University of Technology	Procurement and installation of equipment for Engineering workshops	125,000,000
Masvingo	Chiredzi Leather Cluster	Construction of SME's market	40,000,000
Masvingo	Great Zimbabwe University	Roofing and glazing of Medical School	300,000,000
Masvingo	Chivi	Designs	12,000,000
Matabeleland North	Lupane State University	Pile foundations, concrete works, brickwork to 2nd, electrical work for Faculty of Humanities	122,000,000
Matabeleland North	Lupane State University	Electrical works, ventilation, painting, installation of solar water system and civil works for Male Student Hostels & Solar Hot Water System	20,000,000
Matabeleland North	Lupane State University - Senior Staff Flatlet	2nd floor slab, brickwork to roof, roofing, electrical work, plumbing, plastering, air-conditioning & painting	40,000,000
Matabeleland North	Lecture blocks at Hwange Campus College Satellite to United College of Education	Construct to completion one lecture block	70,000,000
Matabeleland North	Hwange Teachers' College Admin Block	Construct to completion one lecture block	70,000,000
Matabeleland South	Gwanda State University	116 Blocks of Housing Units refurbished and upgraded	110,000,000
Matabeleland South	Gwanda University	Construction of lecture block	60,000,000
Matabeleland South	Home Economics block at J.M. Nkomo Polytechnic	Last fixes to electrical & plumbing, painting, civil works, procurement & installation of equipment	80,000,000

PROVINCE	PROJECT NAME	2021 PLANNED WORKS	2021 CONSOLIDATED REVENUE FUND
			ZWLS
Matabeleland South	Lecture Theatre at J.M. Nkomo Polytechnic	Last fixes to electrical & plumbing, painting, civil works, procurement & installation of equipment	80,000,000
Midlands	Midlands State University	Brickwork from ground floor, first floor deck installation, roofing and internal finishes for Library	40,000,000
Midlands	Midlands State University	Brickwork from ground floor, first floor deck installation, roofing and internal finishes for construction of faculty of law	45,000,000
Midlands	Midlands State University	Brick work from first floor to completion of female hostel & roofing and completion of two warden houses	190,000,000
Midlands	Mkoba Teachers' College	Construction of Science Centre to first floor deck	40,000,000
Midlands	Gweru Polytechnic	Fabrication Workshop at Gweru Polytechnic	30,000,000
Midlands	School of hospitality	Designs	34,000,000
National	Innovation Hubs at 4 state Universities (CUT, UZ, MSU and NUST)	Procurement and installation of mechanical & chemical equipment and fittings	150,000,000
National	Industrial parks at four state universities (CUT, UZ, Marondera & MSU)	Construction to ring beam level of two industrial parks	200,000,000
Defence and War Veterans			
Bulawayo	Rehabilitation of Air Force Institutional Buildings	Construction and Rehabilitation of Air Force Institutional Buildings	10,000,000
Harare	ZNDU Library	Completion of designs and undertaking project preparation works	144,552,000
Harare	Army HQ-Cadet Mess	Plumbing, electrical, carpentry, painting, landscaping, car park, resuscitation of the perimeter wall and main entrance.	60,000,000
Harare	Dzivarasekwa Houses	Construction of 300 units to completion	700,000,000
Harare	Rehabilitation of ZNA Institutional Buildings	Renovation and retooling of courtroom various buildings	12,000,000
Harare	Construction of 2 Med Corp Hospital	Construction of a Referral Hospital to completion	25,000,000
Harare	Construction of Armouries	Construction of armoury to completion	10,000,000
Harare	Airforce of Zimbabwe-90 flats	Sub structure Works, Super Structure Works, Fittings and Roofing	33,617,000
Harare	Manyame Airbase Hospital	All the ground floor, first floor and second floor construction works and refurbishment of the existing structure	1,400,000,000
Mashonaland West	Gallery Range	Completion of the retention wall at the butts area. Fixing of target frames, clearing, levelling and marking of the range	16,000,000
Midlands	Imbizo Housing Project	Completion of 70 units	162,000,000
National	Purchase of Institutional Accommodation	Purchase of 3 Institutional Accommodation buildings	150,000,000
Finance and Economic Development			
Bulawayo	Region 2 Regional Office	Erection of boundary wall and palisade fence	20,000,000
Harare	ZIMRA Head Office	Civil works, preliminaries and general works	225,000,000
Manicaland	Mutare Customs House	Refurbishment of accommodation facilities.	25,000,000
Manicaland	Chipinge Town office	Construction of offices	25,000,000

PROVINCE	PROJECT NAME	2021 PLANNED WORKS	2021 CONSOLIDATED REVENUE FUND
			ZWL\$
Manicaland	Mt Selinda Water Tank	Refurbishment of the tank	4,500,000
Manicaland	Forbes Truck Park	Construction of truck park	200,000,000
Manicaland	Mutare Dry Port	Construction of dry port	85,000,000
Manicaland	Mutare Valley Lodge	Construction of lodging facilities	100,000,000
Mashonaland East	Marondera office	Construction of office accommodation	110,000,000
Mashonaland West	Chirundu Staff Houses	Construction of additional block of flats	75,000,000
Mashonaland West	Makuti Dry Port	Construction of dry port	85,000,000
Mashonaland West	Banket- Dog Training Centre	Construction training centre	150,000,000
Masvingo	Chiredzi Redeployable Office	Construction of office	30,000,000
Matabeleland North	Kazungula Staff Houses	Construction staff accommodation	15,000,000
Matabeleland North	Kazungula Office Buildings Expansion	Office expansion designs and preliminary works.	125,000,000
Matabeleland South	Stand 480 Beitbridge	Construction of staff houses	150,000,000
Matabeleland South	Blue Flat Beitbridge	Construction flats	150,000,000
Matabeleland South	Maitengwe House	Construction of staff houses	25,500,000
Matabeleland South	Beitbridge Express	Construction of staff accommodation at the Boarder	250,000,000
National	Automation	Automation of systems	550,000,000
National	Project Preparation Development Fund	Project Development activities	600,000,000
Foreign Affairs and International Trade			
International	Dodoma	Purchase of Chancery	200,000,000
International	Abuja	Rehabilitation of Chancery	100,000,000
International	Lusaka	Rehabilitation of Chancery	100,000,000
International	Pretoria	Rehabilitation of Chancery	100,000,000
International	Abi Dabhi	Construction of Chanceries	150,000,000
International	UAE	Construction of Chanceries	150,000,000
International	Maputo	Rehabilitation of Chancery	200,000,000
International	Beira	Rehabilitation of Chancery	100,000,000
Zimbabwe Electoral Commission			
National	Purchase of office building	Purchase of office building	38,600,000
Lands, Agriculture, Water and Rural Resettlement			
Harare	Crop Breeding Institute	Erection of 3.4km Perimeter fence at Harare Research Centre, Erection of 20km Perimeter Electric fence at Nyanga Potato Quarantined Area & refurbishment of irrigation infrastructure	57,286,000
Harare	Horticulture Research Center	Refurbishment of Irrigation structures.	8,416,000
Harare	Plant Protection Research services	Rehabilitation of Irrigation structures. Water pipe refurbishment.--conveyance works	36,200,000

PROVINCE	PROJECT NAME	2021 PLANNED WORKS	2021 CONSOLIDATED REVENUE FUND
			ZWLS
Harare	Institute of Agriculture Engineering	Rehabilitation and upgrading of training facilities	50,000,000
Harare	Water supply for Central Veterinary Laboratory	Upgrading of the Central Veterinary Laboratory	10,000,000
Harare	Ngungunyana building	Rehabilitation of the building and construction of a guard room	200,000,000
Manicaland	Coffee Research Institute	Construction and refurbishment of offices, laboratories and staff housing.	38,553,000
Manicaland	Nyanga experiment Station	Major Irrigation structures. Water pipe refurbishment.	26,335,000
Manicaland	Chisumbanje Research Institute	Construction of Palisade fence to cover 5 km boundary fence.	70,318,000
Manicaland	Save Research Institute	Irrigation structures major refurbishment	42,625,000
Manicaland	Marovanyati irrigation	Feasibility Study for 1250ha	6,134,000
Manicaland	Osborne irrigation	Feasibility Study for 5000ha	24,535,000
Manicaland	Ruti irrigation	Construction of headworks, supply and installation of pump sets	24,535,000
Manicaland	Bwerudza irrigation	Drilling of two boreholes in Save alluvial aquifer, Infield equipment for 50 ha	12,267,000
Manicaland	Romsley irrigation	Construction of Pump Station; Installation of Mainline line and Pivots	7,360,000
Manicaland	Upper Lesapi irrigation	Construction of Pump Station; Installation of Mainline line and Pivots	4,907,000
Manicaland	Chiduku Tikwiri irrigation	Development of 67ha gravity sprinkler scheme	16,438,000
Manicaland	Mpudzi irrigation	Construction of headworks, supply and installation of mainline and infield works	17,174,000
Manicaland	Hamamaoko irrigation	Development of 80Ha sprinkler scheme	19,628,000
Manicaland	Nyanyadzi irrigation	Conservation works at headworks	15,000,000
Manicaland	Dorowa irrigation	Feasibility study for 30ha	7,360,000
Manicaland	Arda Transau irrigation	Headworks, conveyance and infield	4,907,000
Manicaland	Laverstork/Ena Vante irrigation	Headworks, conveyance and infield	4,907,000
Manicaland	Mudzindiko/Mataka irrigation	Construction of diversion weir	15,145,000
Manicaland	Musanhi irrigation	Borehole drilling, electrification, drag hose sprinkler	7,360,000
Manicaland	Maunganidze irrigation	Borehole Drilling	7,360,000
Manicaland	Nenhohwe irrigation	Conservation works at headworks	7,360,000
Manicaland	Gudyanga irrigation	Borehole drilling	7,360,000
Manicaland	Mutema Taona irrigation	Servicing of pumps and convey infield canals	40,435,000
Manicaland	Zimunda irrigation	Headworks, conveyance and infield	7,360,000
Manicaland	Chipendeke irrigation	Headworks, conveyance and infield of sprinkler drag hose	7,360,000
Manicaland	Masocha irrigation	Mainline repair	7,360,000
Manicaland	Chitemele	Headworks, conveyance, infield of sprinkler irrigation	4,907,000
Manicaland	Taziwa irrigation	Weir and conveyance line repair	7,360,000
Manicaland	Chimanmani District Offices (Animal Extn Services)	Construction of offices	80,000,000

PROVINCE	PROJECT NAME	2021 PLANNED WORKS	2021 CONSOLIDATED REVENUE FUND
			ZWL\$
Manicaland	Marovanyati Dam	Main dam completion, spillway, outlets	200,000,000
Manicaland	Nyanga Water Supply	Raw water gravity main, reservoirs, pump sets and water reticulation network extended	9,900,000
Manicaland	Hauna Water Supply	Raw water gravity main, pump sets, , clear water storage reservoirs constructed, water treatment plant and clear water pumping mains	8,300,000
Manicaland	Checheche Water Supply	Upgrading of treatment plant, reticulation extension, installation of pump sets, 6km x pumping main	6,000,000
Mash East	Kotwa Guest House	Completion of 20 Houses	10,000,000
Mash Central	Vuka irrigation	Pumping units, mainline and infields.	4,907,000
Mashonaland Central	Shamva Staff houses	Construction of staff houses	60,000,000
Mashonaland Central	Shamva Institutional buildings	Construction of student hostels	155,000,000
Mashonaland Central	Shamva Irrigation Develop ment	Construction of irrigation tanks and distribution pipes	30,000,000
Mashonaland Central	Agronomy research	Refurbishment of irrigation structures at Panmure Experiment Station & Construction of Palisade Perimeter fence covering 3.2 kilometres	65,757,000
Mashonaland Central	Henderson Research Institution	Construction & refurbishment of irrigation structures	61,425,000
Mashonaland Central	Shamva District Extension Services Office	Construction of office accommodation	65,000,000
Mashonaland Central	Masembura irrigation	Pumping Units mainline and Electrification	12,267,000
Mashonaland Central	Mwenje irrigation	Installation of headworks, electrification ad installation of infield materials	4,907,000
Mashonaland Central	Chinehasha irrigation	Centre Pivot, Electrification, Pumps and Mainline	4,907,000
Mashonaland Central	Maparo irrigation	Pumping Units mainline and Electrification	9,814,000
Mashonaland Central	Velvekia irrigation	Develop 40ha Irrigation	9,814,000
Mashonaland Central	Nyamuseve irrigation	Installation of headworks and electrification	24,535,000
Mashonaland Central	Kachuta irrigation	Borehole Drilling and Drip Irrigation equipment	7,360,000
Mashonaland Central	Nyambudzi irrigation	Develop 20ha.	7,360,000
Mashonaland Central	Chinehasha irrigation	Develop 40ha Irrigation	9,909,000
Mashonaland Central	Gwingwizha irrigation	Develop 30ha Irrigation	7,431,000
Mashonaland Central	Nyarumwe irrigation	Headworks and electrification	9,909,000
Mashonaland Central	Kanyemba irrigation	Installation of headworks and electrification	32,309,000
Mashonaland Central	Everton irrigation	Develop 30ha Irrigation	7,360,000
Mashonaland Central	Mazowe Bridge irrigation	Develop 20ha Irrigation	4,907,000

PROVINCE	PROJECT NAME	2021 PLANNED WORKS	2021 CONSOLIDATED REVENUE FUND
			ZWLS
Mashonaland Central	Chimhanda Extension irrigation	infield works	4,907,000
Mashonaland Central	Eben irrigation	Electrification and headworks	7,360,000
Mashonaland Central	Chipoli D irrigation	Develop 30ha Irrigation	7,360,000
Mashonaland Central	Morefields irrigation	Electrification, Rehabilitation of Pumps and Transformer Installation	12,267,000
Mashonaland Central	Marondera Provincial offices (Animal Extn Services)	Construction of offices	50,000,000
Mashonaland Central	Construction of Bulls Stables centre	Construction of Bulls Stables centre for artificial insemination	10,000,000
Mashonaland Central	Mushumbi staff house (Tsetse control)	Rehabilitation of Tsetse Guest house	30,000,000
Mashonaland Central	Semwa Dam	Diversion tunnel, coffer dam, cut-off ,grouting and resettlement	850,000,000
Mashonaland Central	Bindura Dam Preparatory Works	Excavations, Grouting, Back filling to original river bed level	314,200,000
Mashonaland Central	Dande Dam	Main dam and tunnel	300,000,000
Mashonaland Central	Silverstroom Dam	Excavations, site establishment	250,000,000
Mashonaland Central	Rushinga- Chimhanda Water Supply	10km long water pumping mains from Chimhanda treatment works to Rushinga and additional water reservoir, pump sets, rehabilitation of treatment works	14,300,000
Mashonaland Central	Musena Youth irrigation	Mailine, Pumps and Centre Pivots	4,907,000
Mashonaland East	Kushinga Institutional Building	Construction of dining hall	50,000,000
Mashonaland East	Grasslands Research Institution	Construction & refurbishment of irrigation structures	93,325,000
Mashonaland East	Domboshava Bee Centre	Construction of a bee centre	10,000,000
Mashonaland East	Goromonzi District Extension Services Office	Construction of office accommodation	100,000,000
Mashonaland East	Wadlove irrigation	Drip Irrigation ,mainline, Pumps and electrification	2,453,000
Mashonaland East	Nyamutsahuni irrigation	Electrification, Mainline ,Pumps and Infield	9,814,000
Mashonaland East	Marsala irrigation	Power line, Pump House Rehabilitation	17,174,000
Mashonaland East	Bitu irrigation	Electrification, Rehabilitation of Pumps and Transformer Installation	12,267,000
Mashonaland East	Mhakwe irrigation	Construction of Pump Station; Installation of Mainline line and Pivots	7,360,000
Mashonaland East	Bonchance irrigation	installation of 3x 40ha centre pivots, installation of pumping units, supply and installation of transformer	7,360,000
Mashonaland East	Sussex irrigation	installation of hydrants, supply of sraylines	9,814,000
Mashonaland East	Sommerset irrigation	supply and installation of transformer, installation of pumping units, supply of 2x 60ha centre pivots	7,360,000

PROVINCE	PROJECT NAME	2021 PLANNED WORKS	2021 CONSOLIDATED REVENUE FUND
			ZWLS
Mashonaland East	Nyamutsahuni irrigation	electrification, supply and installation of high voltage line, pumping units, supply and installation of mainline and infield pipelines and supply of spray lines	7,360,000
Mashonaland East	Nyazvikatsi irrigation	electrification, supply and installation of high voltage line, pumping units, supply and installation of mainline and infield pipelines and supply of spray lines	8,587,000
Mashonaland East	Kudzwe irrigation	electrification, supply and installation of high voltage line, pumping units, supply and installation of mainline and infield pipelines and supply of spray lines	9,814,000
Mashonaland East	Nyambiri irrigation	Mainline and pumping units.	9,814,000
Mashonaland East	Chigara BBH irrigation	Centre pivots and mainline pumps	4,907,000
Mashonaland East	Fraskati irrigation	Pumping units and infield.	7,360,000
Mashonaland East	Svisva irrigation	designs are available	7,360,000
Mashonaland East	Tabudirira irrigation	supply and installation of transformer,pumping unit,mailine,infield and spray lines	5,048,000
Mashonaland East	Chikwezvero irrigation	supply and installation of pumping units,electrification,extension of mainlineand supply of sraylines.	7,360,000
Mashonaland East	Chibvi irrigation	supply and installation of pumping units,electrification,extension of mainlineand supply of sraylines.	7,360,000
Mashonaland East	Mutawatawa irrigation	Installation of Pump units, mainline and Infield works	24,535,000
Mashonaland East	Upgrading of Fels Demonstration Centre	Develop facilities for demonstration of drip & centre pivot irrigation systems. Construction of Houses and Offices for the Centre	9,000,000
Mashonaland East	Causeway Dam	Main dam completion, spillway, outlets	217,000,000
Mashonaland East	Chivhu Dam	Grouting, outlets and main dam	2,284,800,000
Mashonaland East	Kunzvi Musami	Site establishment, excavations and access roads	200,000,000
Mashonaland East	Goromonzi Water Supply	Rehabilitation of the breached Chinyika Dam trailing wall, pump station and 100m ³ /hr conventional treatment plant.	10,900,000
Mashonaland East	Parirewa Water Supply	Construction of a pump station, treatment plant and reservoirs	14,200,000
Mashonaland East	Dema Water Supply	Construction of treatment plant, reservoir, 3km pumping mains, booster station	10,100,000
Mashonaland West	Gwebi - Boreholes	Drilling and equipping of boreholes	20,000,000
Mashonaland West	Cotton Research	Construction & refurbishment of irrigation structures	59,409,000
Mashonaland West	Hiltop irrigation	Construction of 10ha drip irrigation.	7,360,000
Mashonaland West	Mola irrigation	Feasibility Study for 2000ha	4,907,000
Mashonaland West	Mopani irrigation	Electrification, supply line and infield works	11,041,000
Mashonaland West	Nyabango irrigation	Mainline rehabilitation, Pump replacements, Borehole rehabilitation	24,535,000

PROVINCE	PROJECT NAME	2021 PLANNED WORKS	2021 CONSOLIDATED REVENUE FUND
			ZWLS
Mashonaland West	Dalkeith irrigation	Pumping Units, Mainline and Infield	24,535,000
Mashonaland West	Madhodha irrigation	Electrification, Pipeline and Pumps for Block A,B and C.30ha and 20ha Centre Pivot	12,267,000
Mashonaland West	Riversdale irrigation	Electrification, supply line ,pumping units and infield works	7,360,000
Mashonaland West	Temperly irrigation	Electrification, Pipeline and Pumps for Block A,B and C.30ha and 20ha Centre Pivot	7,363,000
Mashonaland West	Portelet irrigation	Construction of Pump Station; Installation of Mainline line and Pivots	65,426,000
Mashonaland West	Muzvezve Block 8 irrigation	Electrification, Mainline ,Pumps and Infield	7,360,000
Mashonaland West	Muzvezve Village 13 irrigation	Electrification, Mainline ,Pumps and Infield	7,360,000
Mashonaland West	Millanwood irrigation	Replacement of pumping units and infield equipment	28,271,000
Mashonaland West	Gowe irrigation	Mainline rehabilitation and Centre Pivots	12,267,000
Mashonaland West	Seke Sanyati irrigation	Construction of infield surface system. Drip Irrigation equipment outstanding	4,907,000
Mashonaland West	Kutama irrigation	Pumping Units,Mainlinre and Infield	7,360,000
Mashonaland West	Nyamuvanga irrigation	Fencing and Outstanding Pipeline length	61,334,000
Mashonaland West	Katsvenzve	Development of the irrigation system	7,360,000
Mashonaland West	Emojeni	Mailine,Pumps and Centre Pivots	4,907,000
Mashonaland West	Siakobvu staff house (Tsetse control)	Completion of 15 Houses	150,000,000
Mashonaland West	Nyabira Water Supply	Completion of treatment plant, ground reservoir, booster station. Electrify two water distribution points and reticulation extension to 500 stands	12,400,000
Mashonaland West	Mhangura Water Supply	Construction of raw water abstraction station, rehabilitation of treatment plant , waste water stabilisation ponds, Construction of 1km sewer trunk mains, construction of manholes	15,900,000
Masvingo	Chiredzi Research Institute	Refurbishment of buildings including laboratories	42,625,000
Masvingo	Makoholi Research Institution	Construction & refurbishment of irrigation structures	59,925,000
Masvingo	Rupangwana District Extension Services Office	Rehabilitation and upgrading of Building	20,000,000
Masvingo	Bengura irrigation	Construction of 40ha Infield sprinkler Irrigation Equipment	4,907,000
Masvingo	Lapache irrigation	Centre Pivot, Electrification, Pumps and Mainline	18,325,000
Masvingo	Nyahombe irrigation	Development feasibility studies of a 150ha irrigation scheme	393,000
Masvingo	Gororo irrigation	Electrification, Pumps and Transformer Installation	12,267,000
Masvingo	Gororo Block A & B irrigation	Electrification, Rehabilitation of Pumps and Transformer Installation	12,267,000
Masvingo	Mufusirwa irrigation	Main line,Pumps and Centre Pivots	12,267,000

PROVINCE	PROJECT NAME	2021 PLANNED WORKS	2021 CONSOLIDATED REVENUE FUND
			ZWLS
Masvingo	Chilonga irrigation	Pumping Station Construction and electrification	32,784,000
Masvingo	St Joseph irrigation	Power line, Pump House Rehabilitation	12,267,000
Masvingo	Low Lands irrigation	AC mainline,Pvc Pipeline and Infield	2,453,000
Masvingo	Mahute irrigation	Construction of Pump Station; Installation of Mainline line and Pivots	14,721,000
Masvingo	Muzhwi irrigation	Construction of diversion works at dam outlet and construction of 10km canal section	171,644,000
Masvingo	Nyika irrigation	Pumping Units ,Mainline and Electrification	7,360,000
Masvingo	Manyuchi Mangoma irrigation	Pumping Units ,Mainline and Infield Equipment	4,907,000
Masvingo	Manyuchi irrigation	Pumping Units ,Mainline and Infield Equipment	7,360,000
Masvingo	Nhema irrigation	Development of 50ha Irrigation	12,267,000
Masvingo	Mushaya irrigation	Pumping Units,Mainlinre and Infield	7,360,000
Masvingo	Dendere	Installation of borehole pumps connection to mainline	4,907,000
Masvingo	Tugwi mashandike	Electrification, Rehabilitation of Pumps and Transformer Installation	20,535,000
Masvingo	Foot and Mouth Disease Control Fence	Construction of a 100 km game fence	650,000,000
Masvingo	Jerera Water Supply	Construction of Storage reservoir Reticulation extension Upgrading of treatment plant Installation of pump sets	15,000,000
Matabeleland North	Ziminya Dam	Procurement of Contractor Site Establishment	150,000,000
Matabeleland North	Vhungu Dam	Procurement of Contractor Site Establishment	150,000,000
Matabeleland South	Litumba Water Supply	Construction of 20km pumping main from Beitbridge to Lutumba, reservoir	12,400,000
Matabeleland North	Sedgewick farm breeding & multiplication centre	Fencing and equipping of the farm	5,000,000
Matabeleland North	Calsvale irrigation	Centre Pivot,Electrification,Pumps and Mainline	7,430,000
Matabeleland North	Gwayi Shangani irrigation	Feasibility Study for 15000ha	62,950,000
Matabeleland North	Famona irrigation	Power line, Pump House Rehabilitation	4,907,000
Matabeleland North	Mpolo Mpolo irrigation	Electrification, Rehabilitation of Pumps and Transformer Installation	4,907,000
Matabeleland North	Peterpan irrigation	Electrification, Rehabilitation of Pumps and Transformer Installation	7,360,000
Matabeleland North	Bubi-Lupane irrigation	Electrification and mainline installation	24,535,000
Matabeleland North	Redwood irrigation	Develop 30ha Irrigation	50,483,000
Matabeleland North	Tembanani-Vusanani irrigation	Develop 30ha Irrigation	7,360,000
Matabeleland North	Phaphamani irrigation	Night Storage, Electrification, Pumps and Mainline	7,360,000
Matabeleland North	Binga District Offices (Animal Extn Services)	Construction of offices	100,000,000
Matabeleland North	Nkayi District Offices (Animal Extn Services)	Construction of offices	100,000,000

PROVINCE	PROJECT NAME	2021 PLANNED WORKS	2021 CONSOLIDATED REVENUE FUND
			ZWLS
Matabeleland North	Gwayi-Tshangani Dam	Main dam and spillway concrete	4,532,400,000
Matabeleland North	National Matabeleland Zambezi Water Project (NMZWP) Phase 1.	Procurement of Contractor Site establishment and commencement of works	550,000,000
Matabeleland North	Inyati Water Supply	Construction of treatment plant, reticulation extension and installation of pump sets	7,500,000
Matabeleland North	Dete Water Supply	Rehabilitate and Equip 6 boreholes, reticulation extensions, 20km x pumping main and 250m ³ brick reservoir	8,500,000
Matabeleland South	Makoshe	Mainline, Pumps and Centre Pivots	4,907,000
Matabeleland South	Mambale	Electrification, Rehabilitation of Pumps and Transformer Installation	3,680,000
Matabeleland South	Matopos Research Institution	Construction & refurbishment of irrigation structures	95,325,000
Matabeleland South	Zhove irrigation	Detailed designs, construction of 2500 ha irrigation infrastructure	50,000,000
Matabeleland South	Kwalu irrigation	Headworks and Infield	7,430,000
Matabeleland South	Portbury irrigation	Construction of Pump Station; Installation of Mainline line	7,851,000
Matabeleland South	Zimbili irrigation	Electrification of pumps	11,041,000
Matabeleland South	Smith Block irrigation	Mainline,Pumps and Centre Pivots	7,360,000
Matabeleland South	Mtshabezi irrigation	Construction of Pump Station; Installation of Mainline line and Pivots	31,802,000
Matabeleland South	Valley irrigation	Electrification, bush clearing 5ha, extend fencing	4,954,000
Matabeleland South	Esigodini District Offices (Animal Extn Services)	Construction of offices	50,000,000
Matabeleland South	Beitbridge staff accommodation (Vet Services)	Construction of staff accommodation	5,000,000
Matabeleland South	Tuli-Manyange Dam	Main dam, saddle dam and outlets	100,000,000
Matabeleland South	Collen Bawn Water Supply	Raw water pipeline, upgrading of treatment plant and 8km pipeline	8,200,000
Matabeleland South	Filabusi Water Supply	Reservoir, 15km pumping main, reticulation extension	5,800,000
Midlands	Makwikwi irrigation	Installation of a 50KVA transformer, Installation of a pumping unit, Installation of a semi portable infield, fencing	4,907,000
Midlands	Chemahororo irrigation	drilling of boreholes and install 60 ha centre pivot	14,721,000
Midlands	Mutange irrigation	Installation of pumps and 2km mainline. Electrification. Installation of infield pipelines. Land clearing on 30ha	32,877,000
Midlands	Igogo irrigation	installation of transformer, fencing, Construction of Pump Station; Installation of Mainline line and Pivots	7,360,000
Midlands	Igogo Takawira irrigation	upgrading transformer, boundary fencing	4,907,000
Midlands	Milsonia irrigation	installation of transformer, installation of pipeline, centre pivot, pumping unit and fencing	7,431,000
Midlands	Chimwe Chegato irrigation	Rehabilitation of pumping units, mainline and infield.	4,907,000

PROVINCE	PROJECT NAME	2021 PLANNED WORKS	2021 CONSOLIDATED REVENUE FUND
			ZWLS
Midlands	Chaora block irrigation	electrification, night storage construction, awarded at phase 1	59,865,000
Midlands	Nyaje irrigation	installation of transformer, drilling of two boreholes, installation of drip system on 10ha	7,360,000
Midlands	Mabwematema irrigation	feasibility study	7,360,000
Midlands	Gokwe Water Supply	Construct a 7km water reticulation pipe network for Mafungautsi	5,300,000
Midlands	Mberengwa Water Supply	Construction of storage reservoir at Mberengwa turn off, reticulation extension,	7,300,000
National	Crops & Livestock R&D	Construction of F14 houses	44,500,000
National	Rural staff housing - Agric extetion services	Rehabilitation of staff houses	100,000,000
National	Smallholder Irrigation Revitalisation Programme (IFAD)	Irrigation scheme rehabilitation	30,000,000
National	Operation and maintenance of irrigation schemes	Urgent repairs for system break downs. Operationalisation of 10 More Food for Africa Schemes	7,360,000
National	Pedstock Irrigation Equipment Facility	Procurement and installation of centre pivots	34,000,000
National	Upgrading and rehabilitation of irrigation demonstration plots	Upgrading and rehabilitation of three centres for Zimbabwe Irrigation Technology Centre and Bulawayo Kraal	15,000,000
National	Off grid Small Holder Farmer led Irrigation Systems	Procurement of equipment and project monitoring	7,360,000
National	VIA(Vitural Irrigation Academy)	Procurement of Irrigation Equipment	7,360,000
National	Integrated Rural Water Supply and Sanitation Project (IRWSSP)	Rehabilitate 870 broken down boreholes & 15 demonstration piped water schemes	500,000,000
National	Borehole drilling (ZINWA)	Drilling of boreholes	820,000,000
National	Water Use Master Plans	Development of water use master Plans on dam projects.	200,000,000
National	Dam Safety	Inspection of 5 dams	40,000,000
National	Dip tanks	Rehabilitation and upgrading of dip tanks	100,000,000
Judicial Services Commission			
Harare	Epworth Magistrates Court	Civil work, brick work, electrical and mechanical works	25,000,000
Mashonaland East	Murehwa Magistrates Court	Civil work, brick work, electrical and mechanical works	60,000,000
Mashonaland East	Mtawatawa Magistrates Court	Civil works, brick work, electrical and mechanical works	15,000,000
Masvingo	Chiredzi Magistrates Court	Civil work, brick work, electrical and mechanical works	25,000,000
Matabeleland North	Lupane Magistrates Court	Civil works ,brick work, electrical and mechanical works	20,000,000
Matabeleland South	Gwanda Magistrates Court	Civil works, brick work, electrical and mechanical works	350,000,000
Midlands	Kwekwe Magistrates Court	Civil works ,brick work, electrical and mechanical works	50,000,000
National	Integrated Case Management System	Establishments of connections through vpn, purchase of materials, machines and other ICT equipment	116,000,000
National	Rehabilitation and Upgrading of Court Facilities	Rehabilitation of court buildings	65,933,000
Youth, Sport, Arts and Recreation			

PROVINCE	PROJECT NAME	2021 PLANNED WORKS	2021 CONSOLIDATED REVENUE FUND
			ZWL\$
Bulawayo	Sizinda Training Centre	Brickwork and roofing	10,000,000
Harare	Chitungwiza Training Centre	Borehole drilling	7,000,000
Harare	National sports stadium	Installation of bucket seats	200,000,000
Harare	Regional sports museum	Museum designing and planning as well as initial construction works	20,000,000
Manicaland	Magamba Training Centre	Refurbishment of buildings	7,000,000
Manicaland	Marange Training Centre	Roofing	10,000,000
Manicaland	Nyanyadzi Training Centre	Refurbishment of buildings	7,000,000
Manicaland	Herbert Chitepo Training Centre	Refurbishment of buildings	7,000,000
Mashonaland Central	Chaminuka Training Centre	Drilling of boreholes	7,000,000
Mashonaland Central	Chawarura Training Centre	Borehole drilling	7,000,000
Mashonaland Central	Bindura Training Centre	Drilling of borehole and building repairs	7,000,000
Mashonaland Central	National sports academy	Excavation of site	20,000,000
Mashonaland East	Nyahoni Training Centre	Repairing of building	7,000,000
Mashonaland East	Tabudirira Training Centre	Drilling of borehole	7,000,000
Mashonaland East	Mudzi Training Centre	Construction of vtc	25,000,000
Mashonaland East	Construction of Training centres-Igava training centre	Drawing of building plan and drilling of borehole	41,600,400
Mashonaland West	Kadoma Training Centre	Construction of classroom block, and roofing	10,000,000
Mashonaland West	Mashayamombe Training Centre	Drilling of borehole and repairing of building	7,000,000
Mashonaland West	Magunje Training Centre	Drilling of borehole and repairing of building	7,000,000
Mashonaland West	Kanyemba Training Centre	Planning and designing	10,000,000
Mashonaland West	Kanyemba Culture Centre	Drawing of plans	90,000,000
Masvingo	Mushagashe Training Centre	Refurbishing of buildings	7,000,000
Masvingo	Gutu Training Centre	Refurbishing of buildings	7,000,000
Masvingo	Tugwi mukosi Training Centre	Planning and designing	10,000,000
Masvingo	Tugwi Mukosi Culture Centre	Planning and designing	20,000,000
Matabeleland South	Esigodhini Training Centre	Repairing of building	7,000,000
Matabeleland South	Avoca Training Centre	Repairing of building	7,000,000
Matabeleland North	Umguza Training Centres	Construction of a new Vocational Training Centre	25,000,000
Matabeleland South	Guyu Training Centre	Drilling of borehole and solar system connection	7,000,000
Midlands	Kaguvi Training Centre	Rehabilitation of the building	7,000,000
Midlands	Nyamusoro Training Centre	Refurbishing of toilets	7,000,000
Midlands	Insukamini Training Centre	Repairing of water system	7,000,000

PROVINCE	PROJECT NAME	2021 PLANNED WORKS	2021 CONSOLIDATED REVENUE FUND
			ZWLS
Midlands	Mvuma Training Centre	Drilling of borehole and repairing of building	7,000,000
National	Multipurpose sport and recreation facilities.	Construct sports facilities	60,000,000
Home Affairs and Cultural Heritage			
Bulawayo	Old Bulawayo	Construction of ablution facilities and water reticulation system	2,075,000
Bulawayo	Natural History	Electrical works	2,656,000
Harare	Auditorium	Upgrading of the auditorium into a digital studio	8,300,000
Harare	Central registry office	Electricals and roofing.	67,690,000
Harare	Chimoio (Tomlinson) flats	Completion of block C2 and civil works	266,000,000
Harare	Glen Norah Housing	Completion of housing units	23,000,000
Harare	Mkushi (Morris) depot	Resuscitation of boiler and steam line, rehabilitation of the Mess.	199,200,000
Harare	National Heroes Acre	Completion of borehole casing	4,500,000
Harare	Chiremba Monument	Completion of renovations and site development	3,154,000
Harare	Liberation War Museum	Survey, architectural and civil works	33,200,000
Harare	Zimbabwe Museums of Human Sciences	Resealing of roof	2,241,000
Manicaland	Chikanga cell block	Complete renovations of station	23,000,000
Mashonaland Central	Guruve district registry	Electrical works	6,680,000
Mashonaland Central	Dotito police station	Complete renovations of station	54,284,000
Mashonaland East	Wedza district registry	Completion of office blocks	11,160,000
Mashonaland East	Murewa district registry	Plumbing and electricals.	8,000,000
Mashonaland East	Wedza Housing	Completion of housing units	20,000,000
Mashonaland West	Chinhoyi 7	Completion of ablution facilities, construction of site museum exhibition	2,924,000
Masvingo	Great Zimbabwe lodges and restaurant	Completion of upgrading of facilities including roofing	2,905,000
Masvingo	Liberation War Heritage Sites	Complete rehabilitation of sites	3,320,000
Masvingo	Tugwi Mukosi	Installation of exhibitions	980,000
Masvingo	Sango border post (electrification)	Procurement and completion of works	810,000
Matabeleland north	Siabuwa Charge office	Complete renovations of station	20,000,000
Matabeleland North	Lupane staff housing units	Initial construction of 20 housing units	24,200,000
Matabeleland North	Kazungula border station (2 bachelor flats)	Procurement and construction of flats	39,000,000
Matabeleland North	Victoria falls (3 bachelor flats)	Procurement and construction of flats	44,040,000
Matabeleland South	Madabe Housing	Completion of housing units	22,000,000
Matabeleland South	Mulampapele Border (electrification)	Procurement and completion of works	810,000

PROVINCE	PROJECT NAME	2021 PLANNED WORKS	2021 CONSOLIDATED REVENUE FUND
			ZWLS
Matabeleland South	Insiza district registry	Completion of walling and tiling.	20,000,000
Information Communication Technology & Courier Services			
Manicaland	E-Government Flagship Projects	The project involves rollout of PFMS to targeted Government institutions	111,000,000
Mashonaland Central	PSC Training centres connected	Connecting 5 additional training centres	41,000,000
Mashonaland East	ICT Security Operations Centre	Requirements gathering, Procurement of Equipment, Installation of Equipment, Installation of Software, Configuration of Security Protocols Commissioning	82,000,000
National	Community Information Centres (CICs)	Establish 30 Community Information Centres	82,000,000
National	ICT Lab Per School	30 ICT Labs	410,000,000
National	PFMS Kiosk	Inspection of all activities Rectification of activities Procurement of equipment Operational and installation acceptance Commissioning	12,000,000
National	Last mile connectivity to MDAs	targeting 100 MDAs Scoping, Procurement of Network Equipment, Installation of Network equipment, Commissioning	49,200,000
Health and Child Welfare			
Bulawayo	Mpilo Central Hospital staff block of residential flat	Completion of residential flat, water & sewer connections, electrical supply upgrading and fire-fighting equipment installation	124,500,000
Bulawayo	Mpilo Central Hospital rehabilitation of reference laboratory	Renovation (painting, tiling) of laboratory, installation of new fixed equipment and commissioning	41,500,000
Bulawayo	Mpilo Central Hospital Laundry equipment	Procurement, purchasing, deliver and installation of 2 washings machines and upgrading the electrical and water supply	41,500,000
Bulawayo	Mpilo Central Hospital elevators	Installation of 2 elevators at the main hospital	20,750,000
Bulawayo	Mpilo Central Hospital General rehabilitation	Redecoration of the hospital infrastructure	91,000,000
Bulawayo	United Bulawayo Hospital infrastructure rehabilitation	Extension of solar heating, power upgrading and water & sewer reticulation system	90,000,000
Bulawayo	United Bulawayo Hospital water reservoir	Construction of the 2.5 mega litre super structure, water connections to the main supplies	99,600,000
Bulawayo	United Bulawayo Hospital elevators	Supply, delivery, installation, testing and commissioning of lifts at Richard Morris and Main Hospital	23,000,000
Bulawayo	United Bulawayo Hospital security fence/wall	Construction of a 2km wall and palisade security wall around the institution and commissioning	13,000,000
Bulawayo	United Bulawayo Hospital laboratory	Construction of the superstructure to roof level and water and sewer reticulation works	83,000,000
Bulawayo	Ingutsheni Central Hospital internal road network	Repaving of the roadnetwork	17,000,000
Bulawayo	Ingutsheni Central Hospital farm infrastructure	Drilling of 2 boreholes and water reticulation, farm houses and electrical supply upgrading, security fencing	8,300,000
Bulawayo	Ingutsheni Central Hospital staff accommodation	Construction of the superstructure of the 2 blocks of flats	298,000,000

PROVINCE	PROJECT NAME	2021 PLANNED WORKS	2021 CONSOLIDATED REVENUE FUND
			ZWLS
Bulawayo	Ingutsheni Central Hospital infrastructure rehabilitation	Refurbishment of hospital wards, kitchens, laundry facilities, installation fire prevention and fighting systems	26,000,000
Harare	Chitungwiza Central Hospital rehabilitation	Maintenance workshop rehabilitation and refurbishment of wards and staff accommodation	33,000,000
Harare	Chitungwiza Central Hospital Mortuary Ablution Block	Construction of the super-structure, water & sewer connections, electrical fittings and commissioning	2,400,000
Harare	Chitungwiza Staff Canteen	Renovation of the canteen, replacement of equipment and procurement of furniture	2,400,000
Harare	Water reservoir and boreholes drilling	Construction of the reservoir structure, boreholes drilling and water reticulation	24,900,000
Harare	Sally Mugabe Central Hospital rehabilitation	Renovation of the main hospital & children's hospital wards, theatres, water & sewer networks	220,697,000
Harare	Parirenyatwa Group of Hospitals security fence/wall	Replace 1000 metres old peripheral fence with durable palisade fencing	30,000,000
Harare	Mbuya Nehanda heating system	Procure and install the Central heating system	50,000,000
Harare	Parirenyatwa Group of Hospitals elevators	Rehabilitation of lifts, installation of elevators at Sekuru Kaguvi, Mbuya Nehanda and the main hospital.	33,300,000
Harare	Parirenyatwa Group of Hospitals open heart theatre	Procure and install H-vac for theatres 8 to 12A	46,500,000
Harare	Parirenyatwa Group of Hospitals infrastructure rehabilitation	Police mortuary upgrading, repairs of calorifiers, boiler overhaul and kitchen equipment and road surfacing	33,200,000
Harare	Parirenyatwa Group of Hospitals medical equipment	Procurement of new medical equipment for all departments	599,260,000
Harare	Parirenyatwa Group of Hospitals dental department refurbishment	Repair and re-decoration of infrastructure and fixed equipment	20,750,000
Harare	National Pharmaceutical Company warehouse	Access road construction, water and sewer reticulation system upgrading, redecoration of the offices	70,000,000
Harare	National Institute of Health Research	Repair and re-decoration of infrastructure and fixed equipment	75,000,000
Harare	Government Analyst Laboratory	Repair and re-decoration of main infrastructure exterior, interior tiling, painting and fixed equipment	60,000,000
Manicaland	Victoria Chitepo Central Hospital	Construction of HDU/ICU, construction of 4 additional theatres and staff accommodation rehabilitation	100,000,000
Manicaland	Buhera Rural Hospital upgrading	Rehabilitation of infrastructure and installation of fixed machinery	365,000,000
Manicaland	Munemo	Completion of the outstanding works on the buildings	20,000,000
Manicaland	Odzi	Completion of new clinic buildings	50,000,000
Mashonaland Central	Bindura Provincial Hospital rehabilitation	Construction of HDU/ICU, construction of 4 additional theatres and staff accommodation rehabilitation	100,000,000
Mashonaland Central	Kanyemba	Completion of the outstanding works on the buildings	45,000,000
Mashonaland Central	Kanyemba Rural Health Centre	Repair the infrastructure, alterate the old structure and expand facilities, construct new departments and upgrade the water and sanitation facilities	82,543,000

PROVINCE	PROJECT NAME	2021 PLANNED WORKS	2021 CONSOLIDATED REVENUE FUND
			ZWLS
Mashonaland East	Marondera Provincial Hospital rehabilitation	Construction of HDU/ICU, construction of 4 additional theatres and staff accommodation rehabilitation	100,000,000
Mashonaland East	Mahusekwa District Hospital Staff Accommodation	Construction and completion of 10 F14 houses and 4 E21 staff houses.	50,000,000
Mashonaland West	Chinhoyi Provincial Hospital rehabilitation	Construction of HDU/ICU, construction of 4 additional theatres and staff accommodation rehabilitation	100,000,000
Mashonaland West	Siakobvu Hospital Upgrading	Rehabilitation of infrastructure and installation of fixed machinery	41,500,000
Mashonaland West	Chipato Clinic	Completion of the outstanding works on the buildings	25,000,000
Mashonaland West	Chiroti	Completion of the outstanding works on the buildings	24,000,000
Mashonaland West	Msapakaruma	Completion of the outstanding works on the buildings	58,000,000
Mashonaland West	Msapakaruma Rural Health Centre	Construction of superstructure at the centre and staff accommodation	65,000,000
Masvingo	Masvingo Provincial Hospital upgrading of infrastructure	Construction of HDU/ICU, construction of 4 additional theatres and staff accommodation rehabilitation	240,000,000
Masvingo	Chiromo Clinic	Completion of the outstanding works on the buildings	20,000,000
Masvingo	Mbuyamaswa	Completion of the outstanding works on the buildings	15,000,000
Masvingo	Tugwi Mukosi	Completion of new clinic buildings	45,000,000
Matabeleland North	Lupane Provincial Hospital	Construction of outpatient department, pharmacy, wards, administration offices and staff accommodation	500,000,000
Matabeleland North	Filabusi District hospital	Rehabilitation of infrastructure and installation of fixed machinery	92,000,000
Matabeleland North	New Nyamandlovu District Hospital	Construction of main super structure and staff accommodation.	300,000,000
Matabeleland North	Tsholotsho Nurse Training School	Completion of the outstanding works on the buildings	70,000,000
Matabeleland North	Hwange District Hospital	Rectification of snags and commencement of Phase II of the hospital which include wards.	70,000,000
Matabeleland North	Chikandakubi Clinic	Completion of the outstanding works on the buildings	23,000,000
Matabeleland North	Dongamuzi	Completion of the outstanding works on the buildings	25,000,000
Matabeleland South	Gwanda Provincial Hospital upgrading of infrastructure	Construction of HDU/ICU, construction of 4 additional theatres and staff accommodation rehabilitation	173,500,000
Matabeleland South	Bulia District Hospital	Construction of a district hospital	385,000,000
Midlands	Gweru Provincial Hospital upgrading of infrastructure	Construction of HDU/ICU, construction of 4 additional theatres and staff accommodation rehabilitation	132,000,000
Midlands	Mberengwa Hospital Upgrading	Rehabilitation of infrastructure and installation of fixed machinery	80,000,000
Midlands	Zvishavane District Hospital Upgrading	Repairing and redecoration of infrastructure	80,000,000
Midlands	Sai	Completion of new clinic buildings	28,000,000

PROVINCE	PROJECT NAME	2021 PLANNED WORKS	2021 CONSOLIDATED REVENUE FUND
			ZWLS
National	District hospitals laundry facilities	Construction and equipping of laundry Department at Shamva and Chipinge District Hospital	70,000,000
National	District hospitals incinerators	Repair, supply, installation and commissioning of incinerators.	80,000,000
National	District and provincial hospitals canteens	Repainting and redecoration of the building, procurement equipment and installation	50,000,000
National	District hospitals mortuary	Rehabilitation of mortuary buildings, cold-rooms and other equipment	75,000,000
National	Mission hospitals	Repainting and redecoration of building, procurement equipment and installation	280,000,000
National	District hospitals general refurbishments	Repair and re-decoration of infrastructure and fixed equipment in all districts hospitals	426,000,000
National	New district hospitals	Feasibility studies	
National	Health posts	Siting, clearing and construction of 10 health posts and equip 4 & commission	50,000,000
National	Impilo Electronic Health Information Management System	Procurement of equipment	375,000,000
National	Ambulances and utility vehicles	Procurement and delivery of 100 ambulances and utility vehicles	590,000,000
National	Medical equipment	Procurement of medical equipment for all health institutions	1 002,543,000

Annexure II: 2021 Inter Governmental Fiscal Transfers Allocation

Ref	Entity	2020 Estimates	2021 Estimates			Indicative Estimates	
		(ZW\$)	Operational (ZWL\$)	Capital (ZWL\$)	Total (ZWL\$)	2022 (ZWL\$)	2023 (ZWL\$)
A	PROVINCIAL COUNCILS						
1	Bulawayo Metropolitan	28,615,000	9,272,800	44,045,700	53,318,500	70,285,500	86,772,200
2	Manicaland	74,069,000	55,508,700	263,666,500	319,175,200	420,742,800	519,435,700
3	Mashonaland Central	55,287,000	35,974,800	170,880,500	206,855,300	272,680,700	336,642,900
4	Mashonaland East	62,582,000	44,303,200	210,440,200	254,743,400	335,807,600	414,577,300
5	Mashonaland West	70,445,000	50,426,700	239,526,700	289,953,400	382,222,100	471,879,100
6	Matabeleland North	47,752,000	29,426,200	139,774,500	169,200,700	223,043,600	275,362,400
7	Matabeleland South	43,308,000	37,292,500	177,139,500	214,432,000	282,668,300	348,973,300
8	Midlands	71,403,000	52,677,100	250,216,200	302,893,300	399,279,800	492,937,900
9	Masvingo	67,284,000	48,936,400	232,447,800	281,384,200	370,926,100	457,933,400
10	Harare Metropolitan	65,655,000	26,981,500	128,162,300	155,143,800	204,513,500	252,485,800
B	Total	586,400,000	390,799,900	1,856,299,900	2,247,099,800	2,962,170,000	3,657,000,000
B	LOCAL AUTHORITIES						
	Bulawayo Metropolitan Province						
1	Bulawayo City Council	66,060,000	16,952,700	483,152,400	500,105,100	659,248,100	813,886,600
	Sub total	66,060,000	16,952,700	483,152,400	500,105,100	659,248,100	813,886,600
	Manicaland Province						
2	Mutare City	19,208,000	6,510,100	185,537,800	192,047,900	253,161,200	312,544,700
3	Chipinge Town Council	4,351,000	3,314,400	94,459,000	97,773,400	128,886,700	159,119,500
4	Rusape Town Council	4,435,000	3,083,200	87,870,600	90,953,800	119,896,900	148,021,000
5	Makoni RDC	59,788,000	9,416,800	268,377,500	277,794,300	366,193,600	452,090,900
6	Chipinge RDC	57,044,000	10,378,500	295,788,300	306,166,800	403,594,900	498,265,300
7	Mutasa RDC	33,498,000	7,425,700	211,632,000	219,057,700	288,766,000	356,501,200
8	Nyanga RDC	30,169,000	6,315,400	179,989,300	186,304,700	245,590,500	303,198,100
9	Buhera RDC	35,159,000	9,178,100	261,577,100	270,755,200	356,914,700	440,635,500
10	Chimanimani RDC	26,620,000	6,560,800	186,982,700	193,543,500	255,132,700	314,978,600
11	Mutare RDC	51,670,000	9,047,200	257,844,300	266,891,500	351,821,500	434,347,400
	Sub total	321,942,000	71,230,200	2,030,058,600	2,101,288,800	2,769,958,700	3,419,702,200
	Mashonaland Central						
12	Bindura Municipality	3,737,000	3,692,500	105,235,900	108,928,400	143,591,500	177,273,500
13	Mvurwi Town Council	1,716,000	3,184,900	90,770,300	93,955,200	123,853,500	152,905,500

Ref	Entity	2020	2021 Estimates			Indicative Estimates	
		Estimates	Operational (ZWL\$)	Capital (ZWL\$)	Total (ZWL\$)	2022	2023
		(ZWL\$)				(ZWL\$)	(ZWL\$)
14	Pfura RDC	30,516,000	8,445,500	240,697,100	249,142,600	328,424,500	405,462,400
15	Muzarabani RDC	27,014,000	6,701,500	190,992,000	197,693,500	260,603,300	321,732,500
16	Mazowe RDC	44,998,000	8,536,100	243,279,300	251,815,400	331,947,800	409,812,100
17	Bindura RDC	26,460,000	6,022,100	171,630,800	177,652,900	234,185,500	289,117,900
18	Chaminuka RDC	19,096,000	6,323,100	180,208,100	186,531,200	245,889,000	303,566,700
19	Mbire RDC	11,275,000	5,652,200	161,087,400	166,739,600	219,799,200	271,357,100
20	Guruve RDC	33,723,000	6,587,300	187,739,300	194,326,600	256,165,100	316,253,100
21	Rushinga RDC	12,630,000	5,482,300	156,244,900	161,727,200	213,191,800	263,199,700
	Sub total	211,165,000	60,627,500	1,727,885,100	1,788,512,600	2,357,651,200	2,910,680,500
	Mashonaland East						
22	Marondera Municipality	5,672,000	3,094,900	88,205,900	91,300,800	120,354,400	148,585,700
23	Manyame RDC	22,942,000	5,316,000	151,505,900	156,821,900	206,725,600	255,216,800
24	Mudzi RDC	21,557,000	6,967,000	198,560,500	205,527,500	270,930,300	334,481,800
25	Mutoko RDC	17,962,000	6,964,100	198,475,500	205,439,600	270,814,300	334,338,700
26	Murehwa RDC	30,950,000	7,853,300	223,819,300	231,672,600	305,395,300	377,031,100
27	Hwedza RDC	40,448,000	4,954,200	141,193,800	146,148,000	192,655,000	237,845,700
28	Goromonzi RDC	36,989,000	8,196,300	233,594,700	241,791,000	318,733,500	393,498,100
29	UMP RDC	18,157,000	6,298,100	179,496,100	185,794,200	244,917,500	302,367,300
30	Chikomba RDC	31,384,000	5,939,300	169,270,000	175,209,300	230,964,200	285,141,000
31	Marondera RDC	33,437,000	5,456,900	155,520,300	160,977,200	212,203,100	261,979,100
	Sub total	259,498,000	61,040,100	1,739,642,000	1,800,682,100	2,373,693,200	2,930,485,300
	Mashonaland West						
32	Chinhoyi Municipality	9,668,000	4,040,700	115,160,200	119,200,900	157,132,900	193,991,300
33	Kariba Municipality	2,893,000	2,954,300	84,197,100	87,151,400	114,884,600	141,832,900
34	Karoi Town Council	4,510,000	3,446,300	98,220,500	101,666,800	134,019,200	165,455,800
35	Chirundu Local Board	1,134,000	3,709,500	105,721,500	109,431,000	144,254,000	178,091,400
36	Norton Town Council	8,934,000	4,146,700	118,180,500	122,327,200	161,254,000	199,079,000
37	Kadoma City Council	11,813,000	4,163,400	118,658,100	122,821,500	161,905,600	199,883,500
38	Chegutu Municipality	6,930,000	3,461,500	98,651,900	102,113,400	134,607,800	166,182,500
39	Sanyati RDC	20,778,000	5,814,800	165,721,300	171,536,100	226,122,200	279,163,200
40	Hurungwe RDC	81,735,000	11,200,200	319,205,600	330,405,800	435,547,300	537,712,600
41	Mhondoro-Ngezi RDC	22,360,000	5,574,700	158,878,200	164,452,900	216,784,800	267,635,700
42	Makonde RDC	34,409,000	6,982,500	199,001,100	205,983,600	271,531,600	335,224,100
43	Zvimba RDC	64,365,000	9,434,300	268,877,200	278,311,500	366,875,500	452,932,600
44	Chegutu RDC	36,736,000	6,683,500	190,479,400	197,162,900	259,903,900	320,869,000

45	Nyaminyami RDC	14,105,000	4,583,700	130,634,600	135,218,300	178,247,300	220,058,400
	Sub total	320,370,000	76,196,100	2,171,587,200	2,247,783,300	2,963,070,700	3,658,112,000
	Matebeleland North						
46	Victoria Falls Municipality	3,834,000	2,832,000	80,711,400	83,543,400	110,128,500	135,961,200
47	Hwange Local Board	3,214,000	3,429,500	97,740,100	101,169,600	133,363,700	164,646,500
48	Lupane Local Board	1,708,000	3,993,700	113,821,600	117,815,300	155,306,400	191,736,300
49	Umguzu RDC	21,899,000	5,545,400	158,045,200	163,590,600	215,648,300	266,232,500
50	Bubi RDC	21,054,000	5,215,200	148,634,400	153,849,600	202,807,400	250,379,500
51	Nkayi RDC	18,589,000	6,533,300	186,198,700	192,732,000	254,063,000	313,658,100
52	Tsholotsho RDC	19,277,000	6,421,700	183,019,700	189,441,400	249,725,400	308,302,800
53	Binga RDC	24,379,000	7,065,500	201,365,500	208,431,000	274,757,700	339,207,000
54	Kusile RDC	14,969,000	6,162,700	175,637,100	181,799,800	239,652,000	295,866,700
55	Hwange RDC	9,092,000	4,769,900	135,941,500	140,711,400	185,488,400	228,998,000
	Sub total	138,015,000	51,968,900	1,481,115,200	1,533,084,100	2,020,940,800	2,494,988,600

Ref	Entity	2020 Estimates	2021 Estimates			Indicative Estimates	
		(ZWS)	Operational (ZWL\$)	Capital (ZWL\$)	Total (ZWL\$)	2022 (ZWL\$)	2023 (ZWL\$)
	Mashonaland East						
22	Marondera Municipality	5,672,000	3,094,900	88,205,900	91,300,800	120,354,400	148,585,700
23	Manyame RDC	22,942,000	5,316,000	151,505,900	156,821,900	206,725,600	255,216,800
24	Mudzi RDC	21,557,000	6,967,000	198,560,500	205,527,500	270,930,300	334,481,800
25	Mutoko RDC	17,962,000	6,964,100	198,475,500	205,439,600	270,814,300	334,338,700
26	Murehwa RDC	30,950,000	7,853,300	223,819,300	231,672,600	305,395,300	377,031,100
27	Hwedza RDC	40,448,000	4,954,200	141,193,800	146,148,000	192,655,000	237,845,700
28	Goromonzi RDC	36,989,000	8,196,300	233,594,700	241,791,000	318,733,500	393,498,100
29	UMP RDC	18,157,000	6,298,100	179,496,100	185,794,200	244,917,500	302,367,300
30	Chikomba RDC	31,384,000	5,939,300	169,270,000	175,209,300	230,964,200	285,141,000
31	Marondera RDC	33,437,000	5,456,900	155,520,300	160,977,200	212,203,100	261,979,100
	Sub total	259,498,000	61,040,100	1,739,642,000	1,800,682,100	2,373,693,200	2,930,485,300
	Mashonaland West						
32	Chinhoyi Municipality	9,668,000	4,040,700	115,160,200	119,200,900	157,132,900	193,991,300
33	Kariba Municipality	2,893,000	2,954,300	84,197,100	87,151,400	114,884,600	141,832,900
34	Karoi Town Council	4,510,000	3,446,300	98,220,500	101,666,800	134,019,200	165,455,800
35	Chirundu Local Board	1,134,000	3,709,500	105,721,500	109,431,000	144,254,000	178,091,400
36	Norton Town Council	8,934,000	4,146,700	118,180,500	122,327,200	161,254,000	199,079,000
37	Kadoma City Council	11,813,000	4,163,400	118,658,100	122,821,500	161,905,600	199,883,500
38	Chegutu Municipality	6,930,000	3,461,500	98,651,900	102,113,400	134,607,800	166,182,500

Ref	Entity	2020 Estimates	2021 Estimates			Indicative Estimates	
		(ZWS)	Operational (ZWL\$)	Capital (ZWL\$)	Total (ZWL\$)	2022 (ZWL\$)	2023 (ZWL\$)
39	Sanyati RDC	20,778,000	5,814,800	165,721,300	171,536,100	226,122,200	279,163,200
40	Hurungwe RDC	81,735,000	11,200,200	319,205,600	330,405,800	435,547,300	537,712,600
41	Mhondoro-Ngezi RDC	22,360,000	5,574,700	158,878,200	164,452,900	216,784,800	267,635,700
42	Makonde RDC	34,409,000	6,982,500	199,001,100	205,983,600	271,531,600	335,224,100
43	Zvimba RDC	64,365,000	9,434,300	268,877,200	278,311,500	366,875,500	452,932,600
44	Chegutu RDC	36,736,000	6,683,500	190,479,400	197,162,900	259,903,900	320,869,000
45	Nyaminyami RDC	14,105,000	4,583,700	130,634,600	135,218,300	178,247,300	220,058,400
	Sub total	320,370,000	76,196,100	2,171,587,200	2,247,783,300	2,963,070,700	3,658,112,000
	Matabeleland North						
46	Victoria Falls Municipality	3,834,000	2,832,000	80,711,400	83,543,400	110,128,500	135,961,200
47	Hwange Local Board	3,214,000	3,429,500	97,740,100	101,169,600	133,363,700	164,646,500
48	Lupane Local Board	1,708,000	3,993,700	113,821,600	117,815,300	155,306,400	191,736,300
49	Umguza RDC	21,899,000	5,545,400	158,045,200	163,590,600	215,648,300	266,232,500
50	Bubi RDC	21,054,000	5,215,200	148,634,400	153,849,600	202,807,400	250,379,500
51	Nkayi RDC	18,589,000	6,533,300	186,198,700	192,732,000	254,063,000	313,658,100
52	Tsholotsho RDC	19,277,000	6,421,700	183,019,700	189,441,400	249,725,400	308,302,800
53	Binga RDC	24,379,000	7,065,500	201,365,500	208,431,000	274,757,700	339,207,000
54	Kusile RDC	14,969,000	6,162,700	175,637,100	181,799,800	239,652,000	295,866,700
55	Hwange RDC	9,092,000	4,769,900	135,941,500	140,711,400	185,488,400	228,998,000
	Sub total	138,015,000	51,968,900	1,481,115,200	1,533,084,100	2,020,940,800	2,494,988,600
	Matabeleland South						
56	Gwanda Municipality	2,762,000	2,877,900	82,021,100	84,899,000	111,915,500	138,167,300
57	Plumtree Town Council	2,035,000	2,971,000	84,673,500	87,644,500	115,534,700	142,635,400
58	Beitbridge Municipality	5,640,000	3,825,100	109,014,900	112,840,000	148,747,900	183,639,400
59	Gwanda RDC	45,591,000	6,163,700	175,666,500	181,830,200	239,692,100	295,916,100
60	Matobo RDC	21,909,000	5,721,500	163,063,600	168,785,100	222,495,700	274,686,100
61	Umzingwane RDC	20,986,000	5,113,300	145,728,200	150,841,500	198,842,100	245,484,100
62	Beitbridge DC	39,258,000	5,226,000	148,941,600	154,167,600	203,226,700	250,897,200
63	Bulilima RDC	28,781,000	5,820,500	165,883,600	171,704,100	226,343,600	279,436,400
64	Mangwe RDC	32,374,000	5,139,500	146,476,500	151,616,000	199,863,200	246,744,600
65	Insiza RDC	54,935,000	5,855,400	166,879,600	172,735,000	227,702,600	281,114,300
	Sub total	254,271,000	48,713,900	1,388,349,100	1,437,063,000	1,894,364,100	2,338,720,900
	Midlands						
66	Gweru City Council	17,076,000	5,466,300	155,788,300	161,254,600	212,568,800	262,430,700

Ref	Entity	2020 Estimates	2021 Estimates			Indicative Estimates	
		(ZWL\$)	Operational (ZWL\$)	Capital (ZWL\$)	Total (ZWL\$)	2022	2023
						(ZWL\$)	(ZWL\$)
69	Shurugwi Town Council	3,038,000	3,442,000	98,096,100	101,538,100	133,849,500	165,246,300
70	Redcliff Municipality	3,198,000	3,132,300	89,270,900	92,403,200	121,807,700	150,379,800
71	Gokwe Town Council	3,690,000	3,557,400	101,386,200	104,943,600	138,338,600	170,788,400
72	Gokwe South RDC	49,436,000	10,861,600	309,554,300	320,415,900	422,378,200	521,454,600
73	Vungu RDC	36,370,000	5,719,700	163,010,300	168,730,000	222,423,100	274,596,400
74	Mberengwa RDC	32,050,000	7,782,400	221,799,500	229,581,900	302,639,300	373,628,700
75	Zibagwe RDC	52,911,000	7,061,600	201,256,600	208,318,200	274,609,000	339,023,400
76	Gokwe North RDC	33,949,000	9,065,600	258,368,500	267,434,100	352,536,700	435,230,500
77	Runde RDC	19,270,000	4,752,600	135,448,800	140,201,400	184,816,200	228,168,000
78	Tongogara RDC	22,072,000	5,140,800	146,512,500	151,653,300	199,912,300	246,805,300
79	Chirumanzu RDC	29,094,000	5,276,200	150,372,600	155,648,800	205,179,200	253,307,700
	Sub total	315,674,000	79,071,600	2,253,536,400	2,332,608,000	3,074,888,200	3,796,158,000
	Masvingo						
80	Masvingo City	6,656,000	4,260,000	121,408,700	125,668,700	165,658,800	204,517,000
81	Chiredzi Town Council	3,704,000	3,433,000	97,839,300	101,272,300	133,499,000	164,813,600
82	Bikita RDC	32,287,000	7,226,500	205,953,900	213,180,400	281,018,300	346,936,300
83	Gutu RDC	38,632,000	7,889,000	224,837,300	232,726,300	306,784,300	378,745,900
84	Zaka RDC	31,020,000	7,603,700	216,704,500	224,308,200	295,687,300	365,046,100
85	Mwenezi RDC	40,718,000	7,547,500	215,104,700	222,652,200	293,504,400	362,351,100
86	Chiredzi RDC	58,219,000	9,639,500	274,725,700	284,365,200	374,855,700	462,784,700
87	Masvingo RDC	49,530,000	7,777,600	221,661,900	229,439,500	302,451,500	373,396,900
88	Chivi RDC	29,028,000	7,188,300	204,866,400	212,054,700	279,534,400	345,104,300
	Sub total	289,794,000	62,565,100	1,783,102,400	1,845,667,500	2,432,993,700	3,003,695,900
	Harare Metropolitan						
89	Harare City	117,133,000	37,119,900	1,057,915,800	1,095,035,700	1,443,496,800	1,782,094,800
90	Chitungwiza Municipality	26,827,000	10,187,800	290,353,700	300,541,500	396,179,600	489,110,600
91	Ruwa Local Board	6,736,000	4,009,500	114,272,100	118,281,600	155,921,300	192,496,000
92	Epworth Local Board	18,115,000	6,516,800	185,730,100	192,246,900	253,423,600	312,868,600
	Sub total	168,811,000	57,834,000	1,648,271,700	1,706,105,700	2,249,021,300	2,776,570,000
	Total Local Authorities	2,345,600,000	586,200,100	16,706,700,100	17,292,900,200	22,795,830,000	28,143,000,000
	GRAND TOTAL	2,932,000,000	977,000,000	18,563,000,000	19,540,000,000	25,758,000,000	31,800,000,000

-
- 1 Data Sources
 - 2 Population - 2012 Census National Report, adjusted by the annual growth rate of 1.1%.
 - 3 Poverty Incidence - Zimbabwe Poverty Atlas (2015) Report.
 - 4 Unpaved Roads - Roads Condition and Inventory Report (2017).

Notes

Population Index - Population component based on the proportion of people in the province to the national population and the number of people in a given Local Authority to the national population.

Poverty Incidence Index - Poverty prevalence component based on the estimated number of people living in poverty per given Province and Local Authority

Unpaved Roads Index - Used to approximate infrastructure deficit. This is based on the proportion of unsurfaced roads per given Province and Local Authority to the National unsurfaced road network respectively.

Combined Weighted Index - Indices have weights, Population 20%, Poverty Incidence 30% and Infrastructure 50%.